



SyncMoTM

QUICK START GUIDE

Guide Contents

Installing SyncMo

Launching the Software

Activating your License

Connecting your Adult Toy

Watching Content

Advanced Settings

SyncMoTM

QUICK START GUIDE

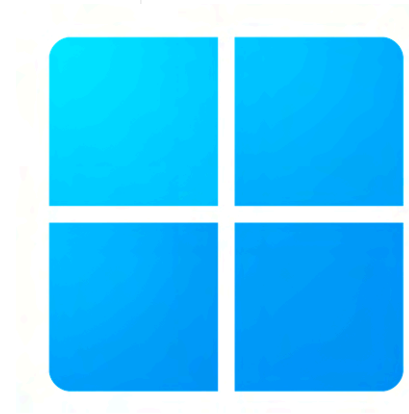
Step 1

Installing SyncMo

Pick your Operating System



MacOS 12.3 or above



Windows 10 or 11

Step 1a

WINDOWS VERSION

Check your **Windows** version and processor type

Compatible Windows OS

Windows 10



Windows 11



NOTE: Please update to Windows version 10 or above in order to use SyncMo

Type of Processor your computer has:

Intel Core i5 or equivalent

At least 4GB of Ram

A reasonably mid-level processor is required for SyncMo to operate correctly

We do not recommend using SyncMo on Netbooks or devices with less than 1.8Ghz and 2-4 CPU cores

Please contact support if you are unsure whether your computer meets these requirements

View basic information about your computer

Windows edition

Windows 10 Pro

© 2015 Microsoft Corporation. All rights reserved.



System

| | |
|-------------------------|---|
| Processor: | Intel(R) Core(TM) i5 CPU M 460 @ 2.53GHz 2.53 GHz |
| Installed memory (RAM): | 4.00 GB (3.86 GB usable) |
| System type: | 64-bit Operating System, x64-based processor |
| Pen and Touch: | No Pen or Touch Input is available for this Display |

Pen and Touch:

No Pen or Touch Input is available for this Display

System type:

64-bit Operating System, x64-based processor

Installed memory (RAM):

4.00 GB (3.86 GB usable)

Processor:

Intel(R) Core(TM) i5 CPU M 460 @ 2.53GHz 2.53 GHz

Step 1b

MAC VERSION

Check your **MacOS** version and processor type

Compatible Mac OS

Monterey



Ventura

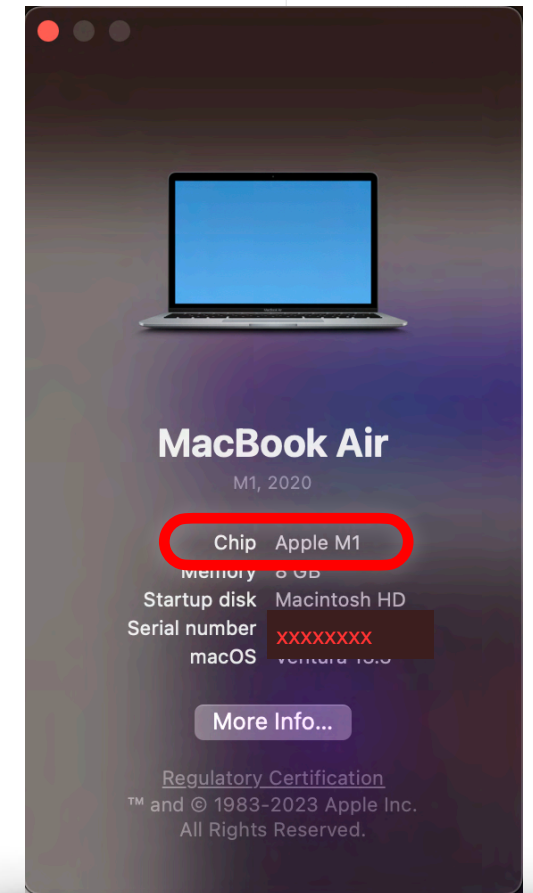
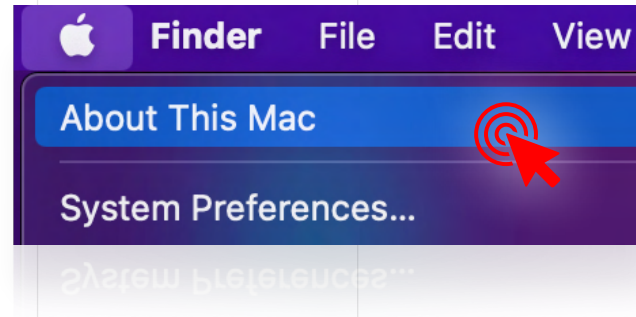


NOTE: Please update to macOS version 12.3 or above in order to use SyncMo

Type of Processor your computer has:

Intel

Apple M1/M2



Step 2

Once you know which OS and processor you have, **download the correct version of the software**

You can download it from the website or by clicking the links below



**Download for macOS
(Apple Silicon, M1/M2)**



**Download for macOS
(Apple Intel)**



**Download for Windows
(x64)**

Step 3a

WINDOWS VERSION

Once the Installer exe file has finished downloading...

Go to downloads and open it to start the **installer**

Once the installer is open follow the Instructions and complete the installation.

You can then launch SyncMo from your desktop, taskbar, or start menu.

[Skip to Activating your License >](#)



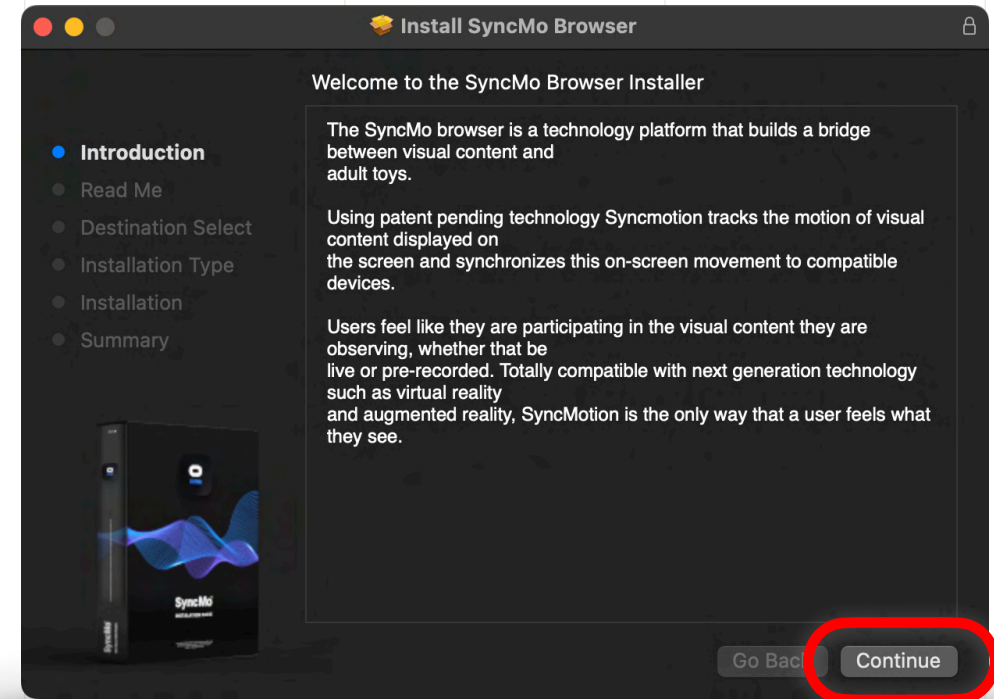
Step 3b

MAC VERSION

Once the Installer pkg file is downloaded

Go to downloads and open it to start the [installer](#)

Once the installer is open follow the Instructions



Step 3b.1

MAC VERSION

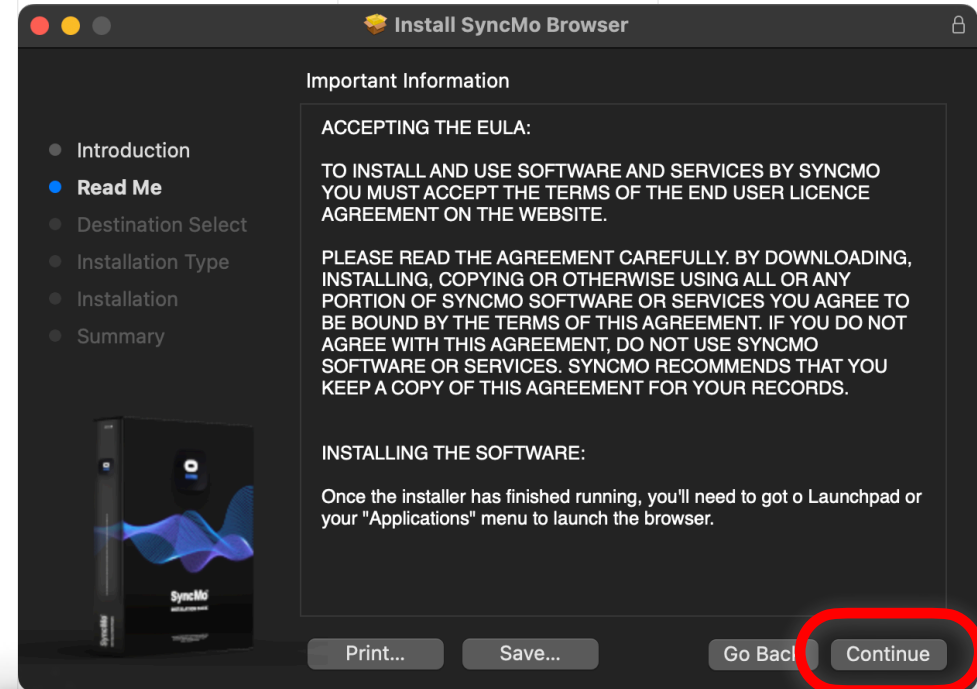
Read Me

Please read and ensure that you accept our EULA on the website before continuing.

Once you are sure,

Press

Continue



Step 3b.2

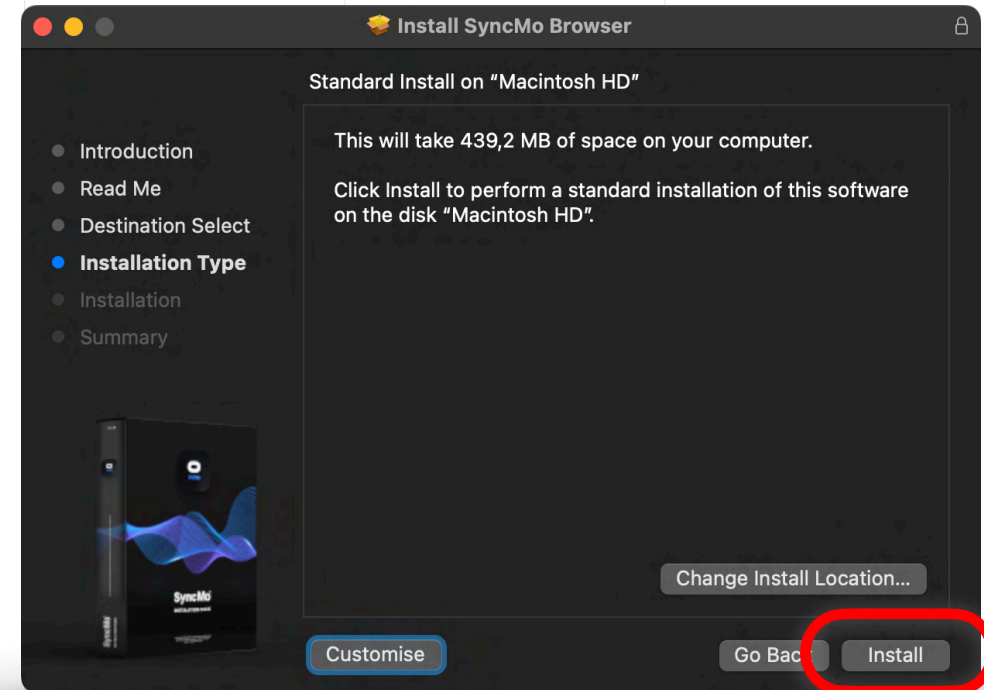
MAC VERSION

Destination select and Installation Type

SyncMo will not function correctly if you change the install location, so simply press

Press

Install



Step 3b.3

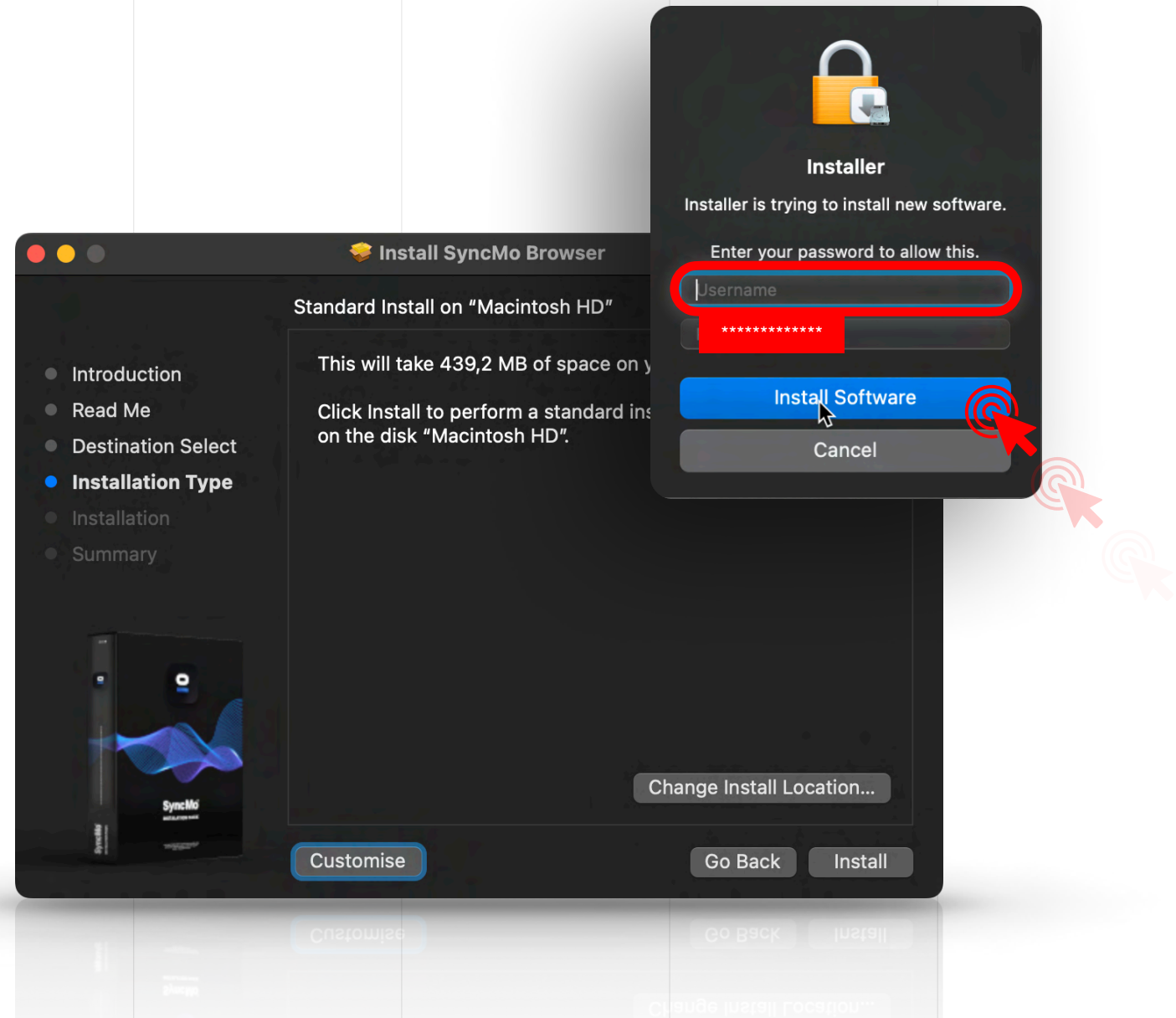
MAC VERSION

Enter your System Password

This is a system prompt which is standard for all macOS software, in order to install the necessary files and services for our software function correctly.

Press

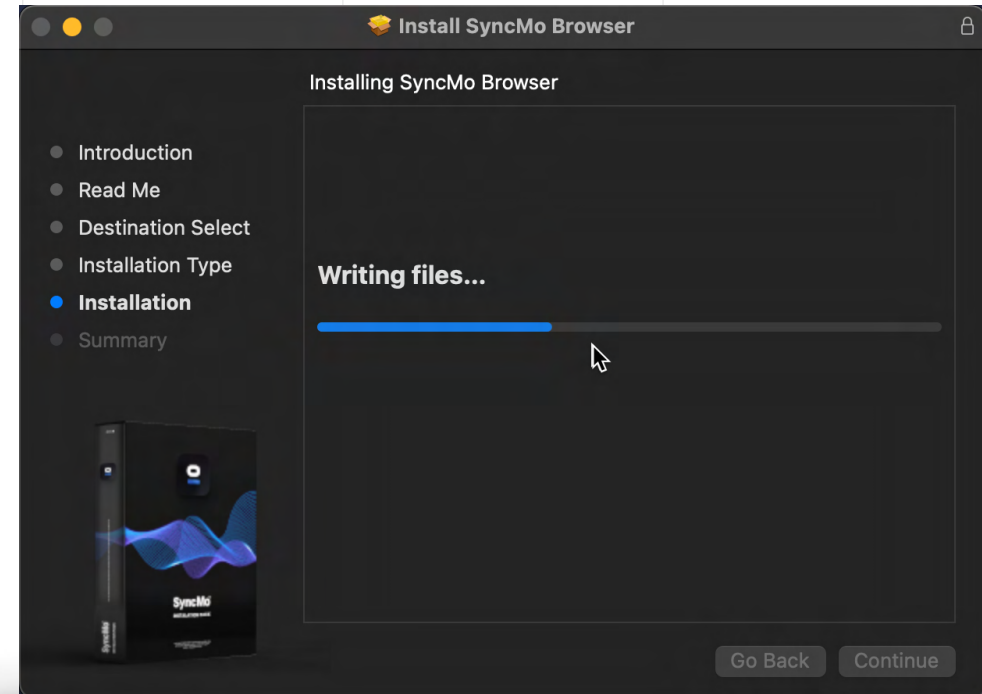
**Install
Software**



Step 3b.4

MAC VERSION

Wait for a few
seconds while
everything installs



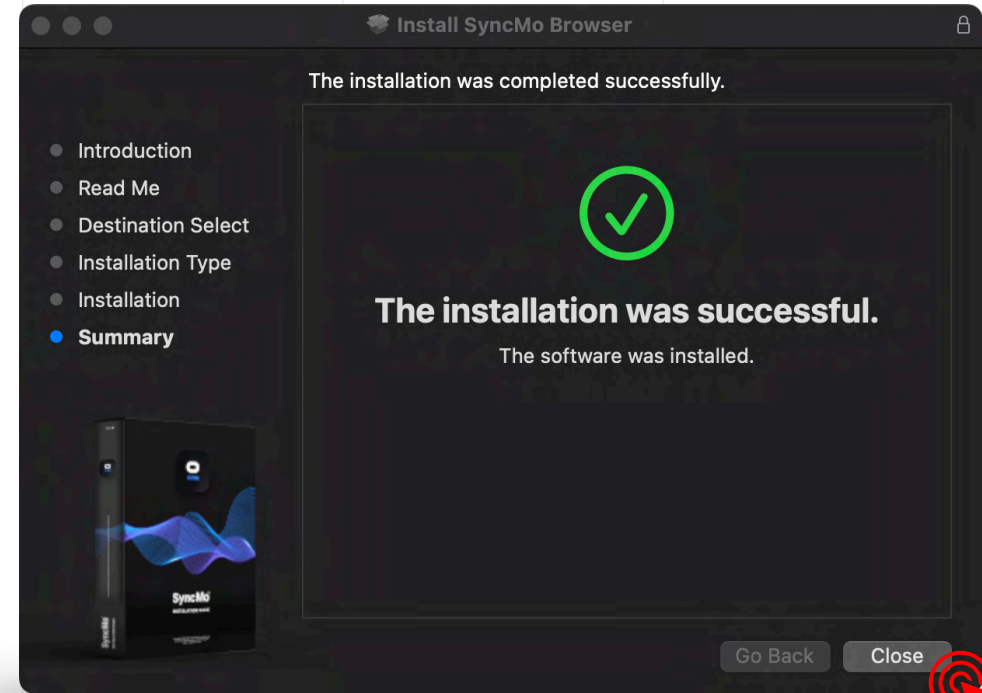
Step 3b.5

MAC VERSION

Once the installation
is successful

Press

Close



Step 3b.6

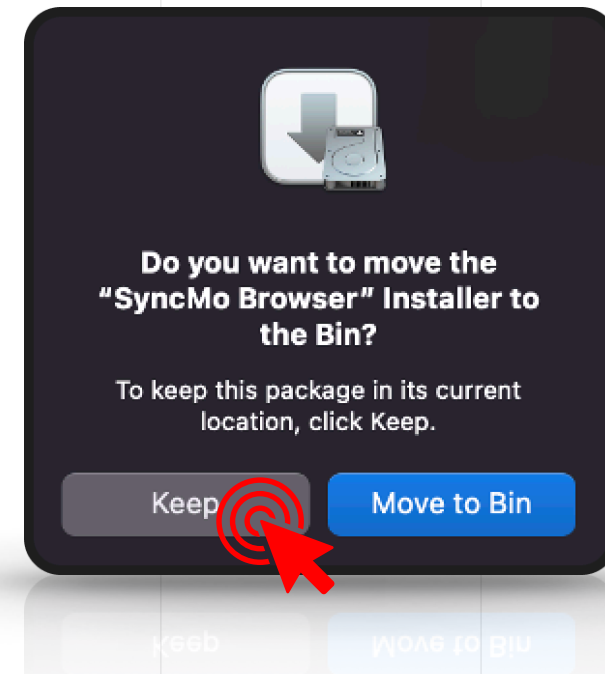
MAC VERSION

MacOS may ask you whether you wish to **keep the installer**

Keep: this will keep the PKG in your downloads

Move to Bin: this will move the PKG from downloads to Trash

After you choose an option the installer will close

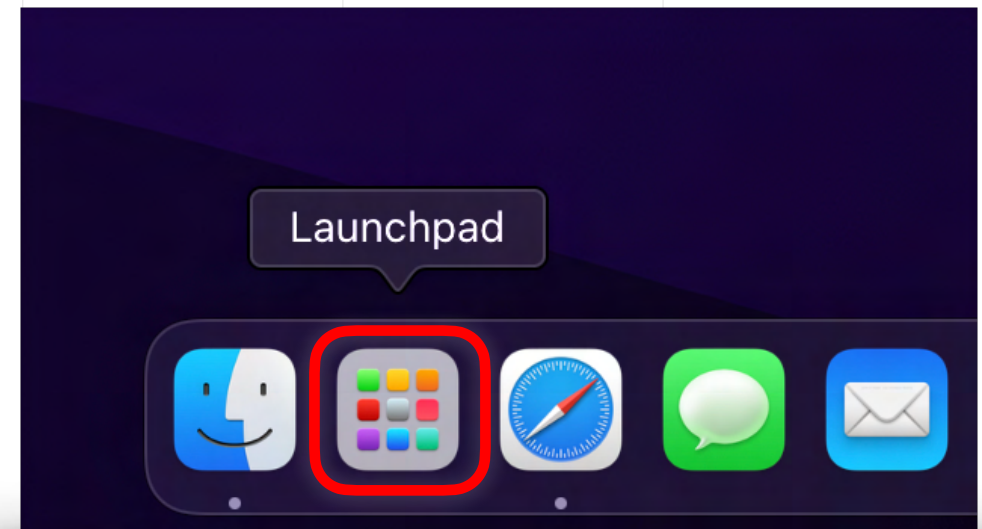


Step 4

MAC VERSION

To launch SyncMo

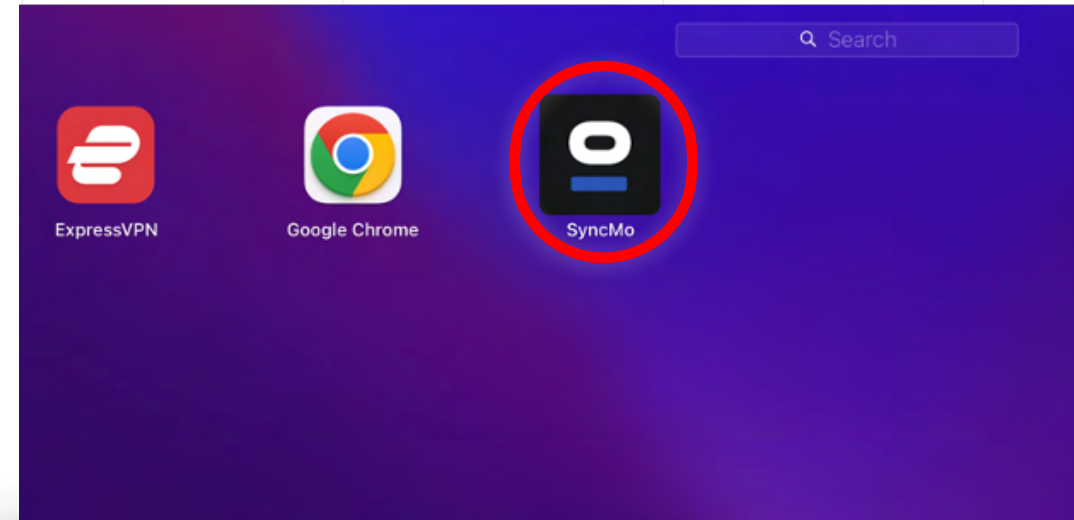
Open the Launchpad on your desktop, by choosing this icon in the Dock at the bottom of your screen



Step 4.1

MAC VERSION

Once you have opened the Launchpad you will find the **SyncMo icon** with your other apps



Step 5

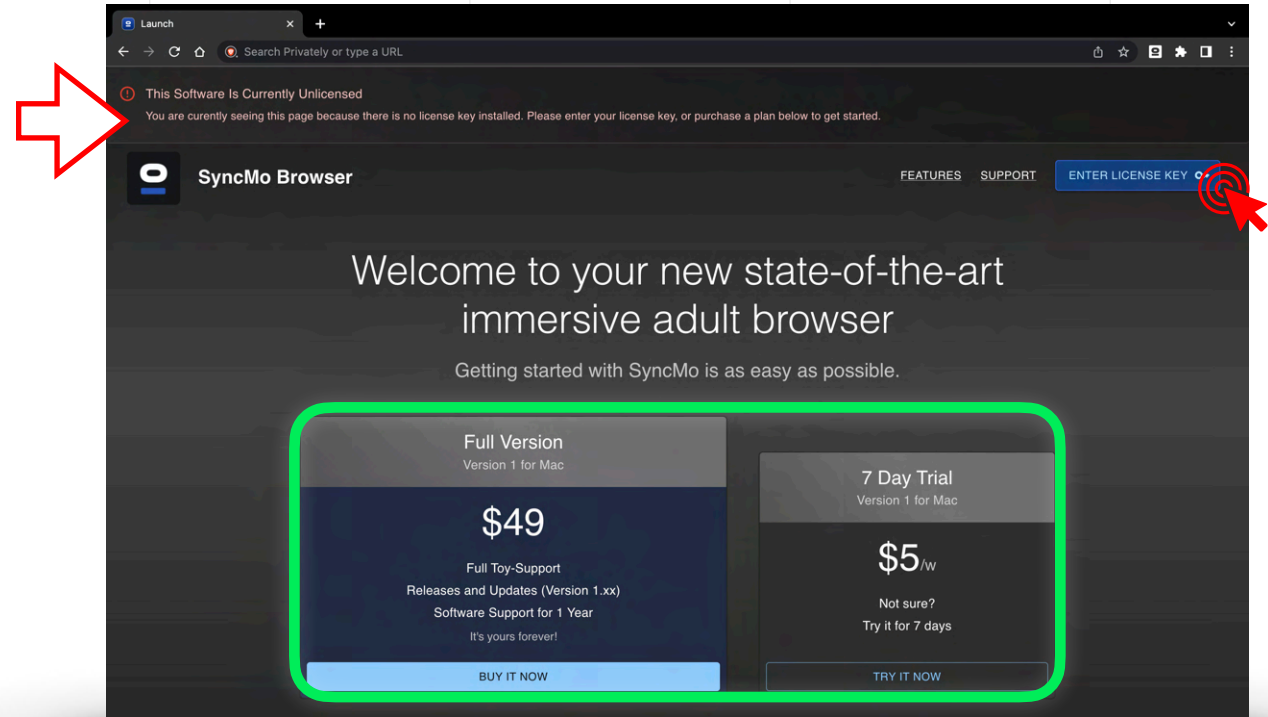
SyncMo Browser launch page will **open**

If you have received your **license key**

Select

Enter license key

*Note: If you do not have a license key, you can **purchase** one to activate the software here*

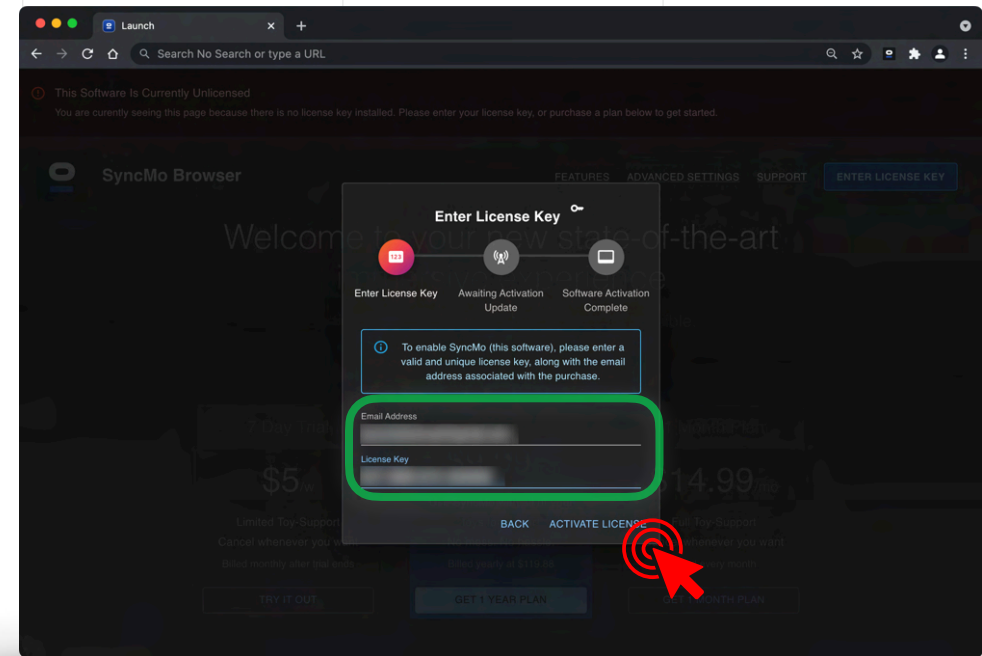


Step 5.1

Please enter your
email address and
license key

Then press

Activate License

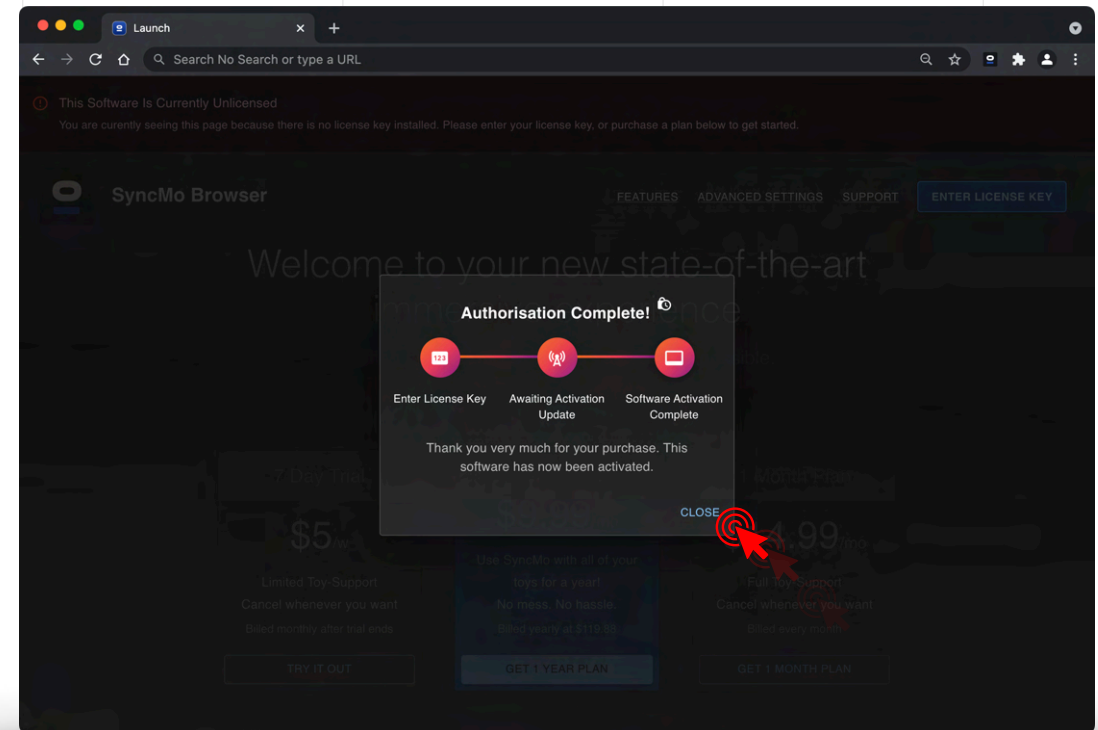


Step 5.2

Authorisation is now
complete

Press

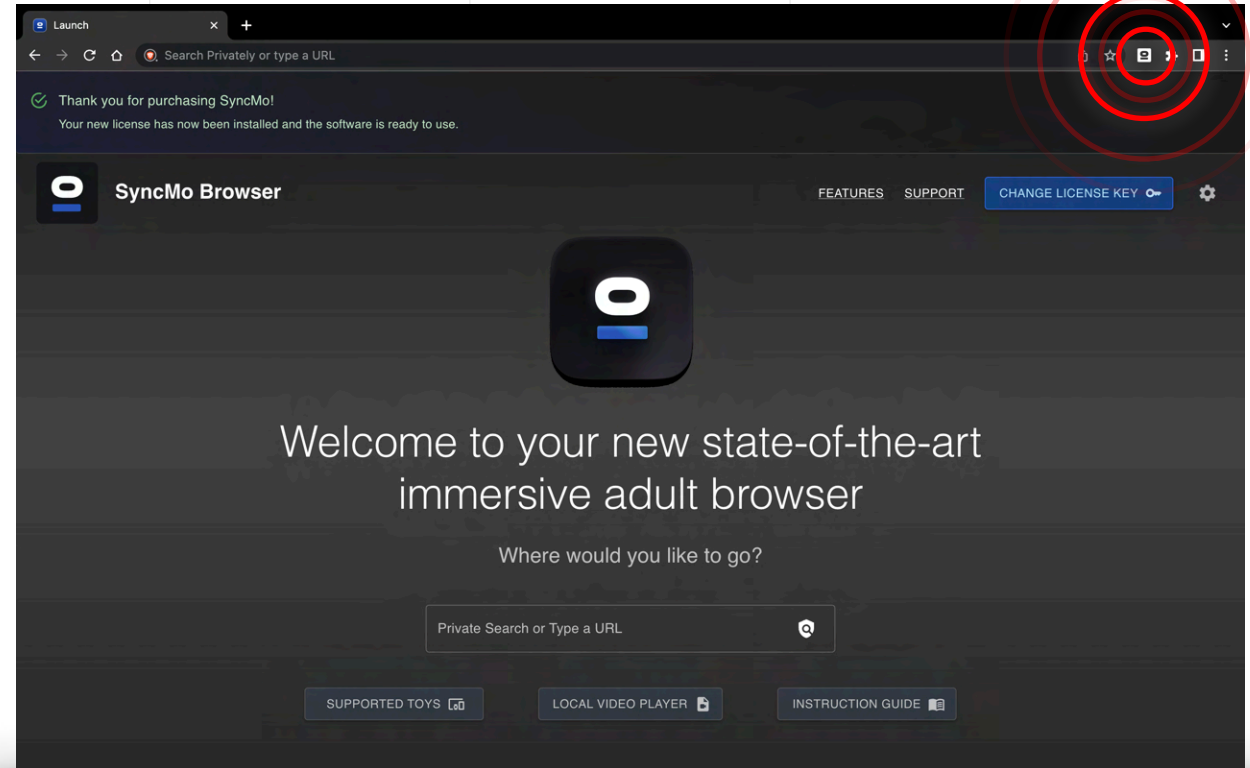
Close



Step 6

Now SyncMo is activated

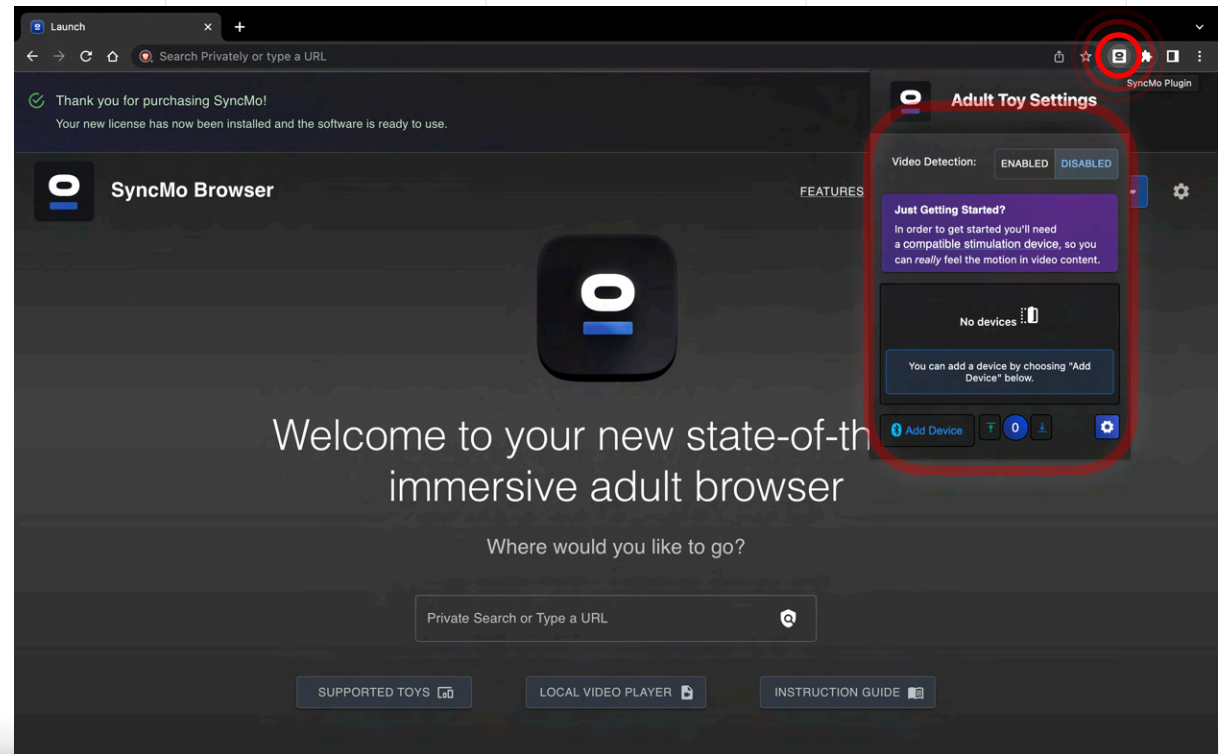
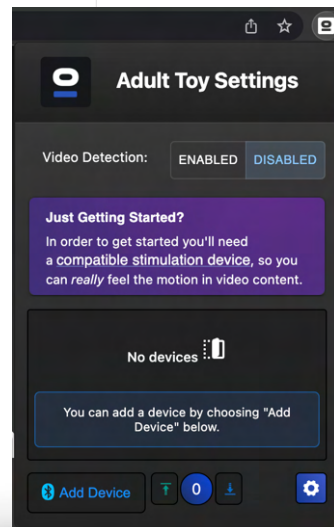
Press the SyncMo Icon in the
navigation bar 



Step 6.1

The **Adult Toy Settings** window will open below

This is where you can add and configure your adult toys



Step 6.2

In Adult Toy Settings enable video detection

Select

Enabled



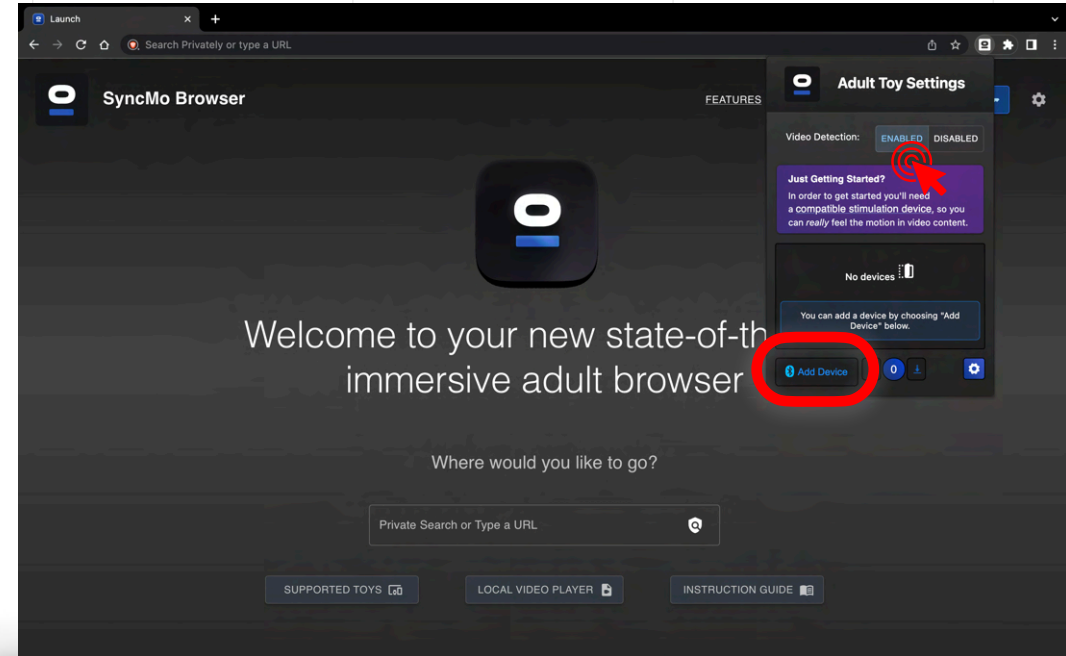
Please make sure that your computer has Bluetooth is turned on



Please also make sure your adult toy is switched on and is in **discovery mode**

Then in Adult Toy Settings select

Add Device



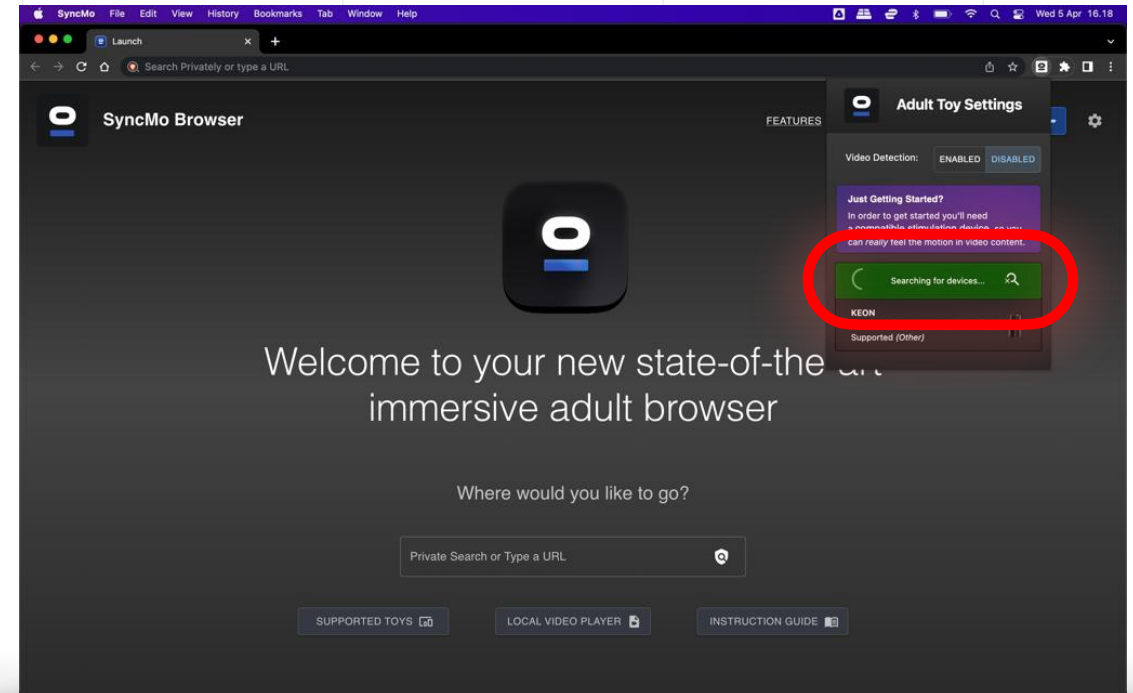
Step 6.3

SyncMo will now search for devices

Your **adult toy** will appear under the search section.
Select the adult toy to connect

If you do not see your device, please make sure your adult toy is switched on and is in **discovery mode**.

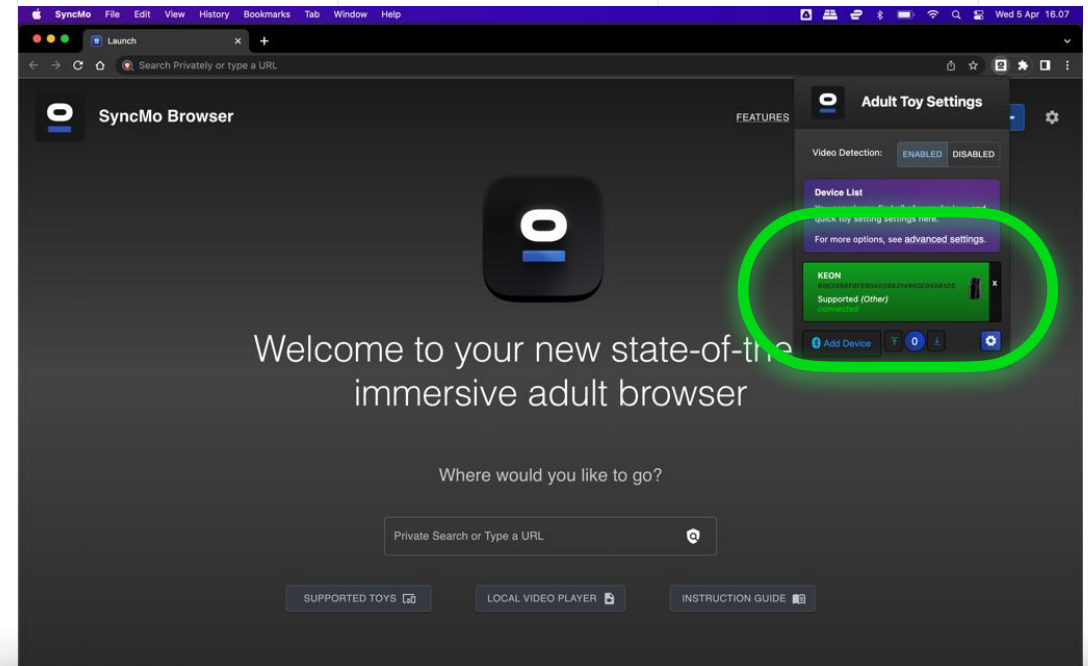
Usually this causes the bluetooth light to flash on the device. Please check your device manual for details.



NOTE FOR MACOS USERS: During the first time you add a device you may be asked by macOS to give SyncMo permission to use Bluetooth

Step 6.4

Once your adult toy is connected the section will be green and say connected

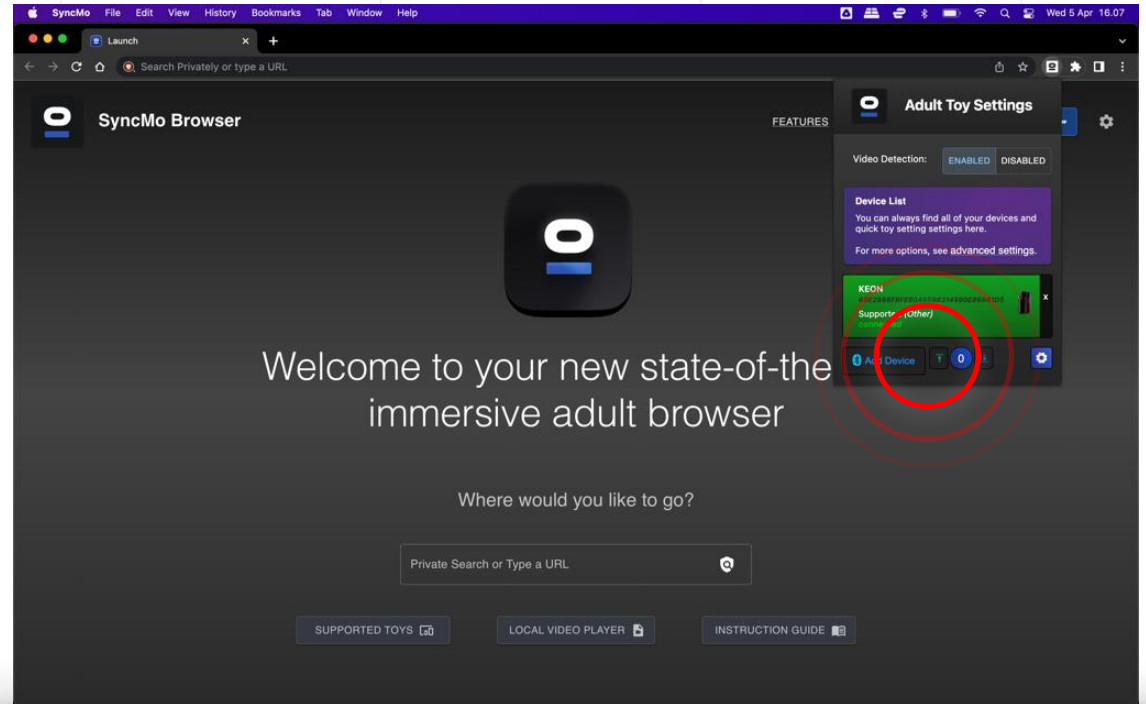


Step 6.5

Now your toy is connected

You can **test your adult toy** to make sure it is receiving commands from SyncMo.

Simply use the up and down buttons at the bottom of the Adult Toy Settings window while the toy is connected, and the device should begin to move, vibrate, pulsate, heat-up, squeeze or suction, depending on the device you have purchased.



Step 6.6



If you press the **settings button** to the right of the speed test buttons, you will find some quick settings for controlling how SyncMo reacts to content

Action Sensitivity

HIGH

High – Very reactive to any movement to start toy speeds

MED

Med – Requires Med motion to start toy speed activity

LOW

Low – Requires High motion to start toy speed activity

Cruise Control

STOP

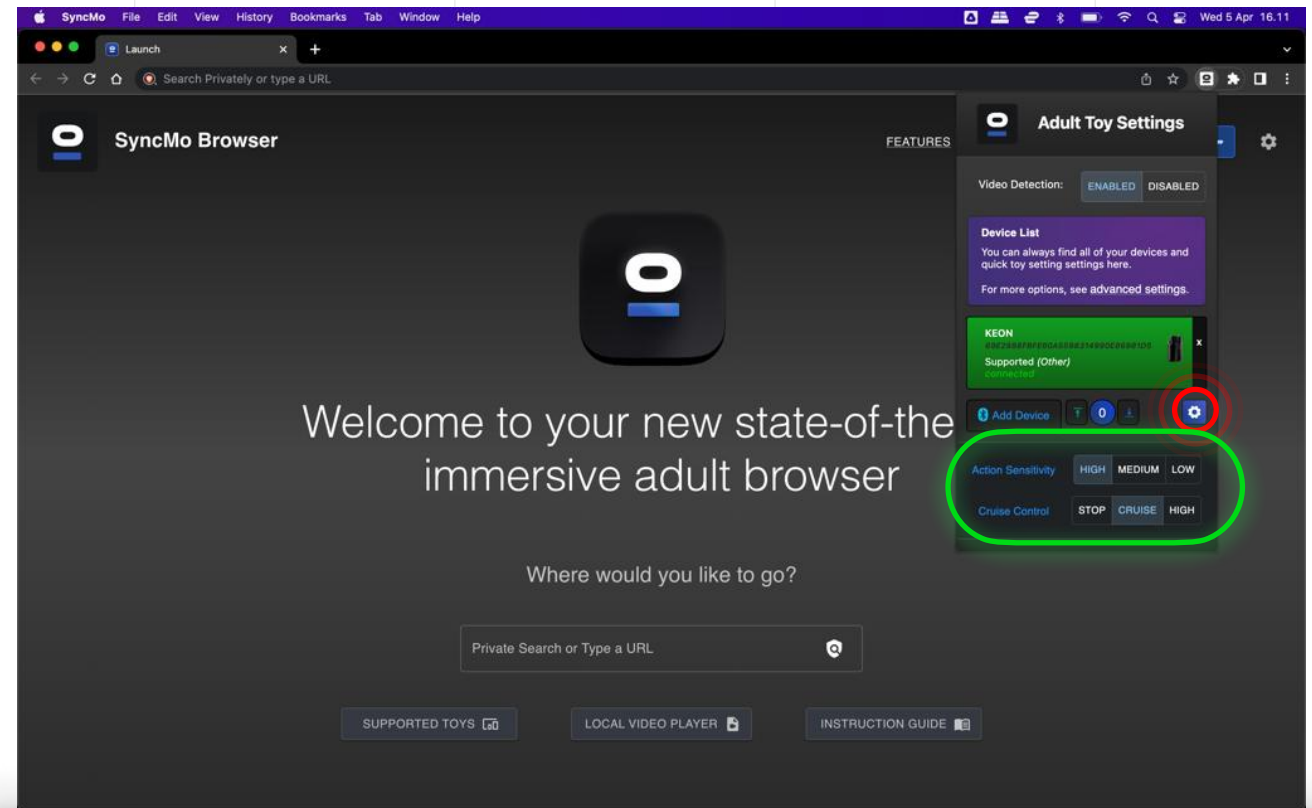
Stop. When there is no movement your toy will stop

CRUISE

Cruise. When the tracked movement is 0 the toy will keep a minimum speed (custom or speed 1) until speed activity starts again(This is to maintain arousal until the action picks up again)

HIGH

High. This means when the tracked movement is 0 the toy will keep a higher speed (Speed 2) until speed activity starts again



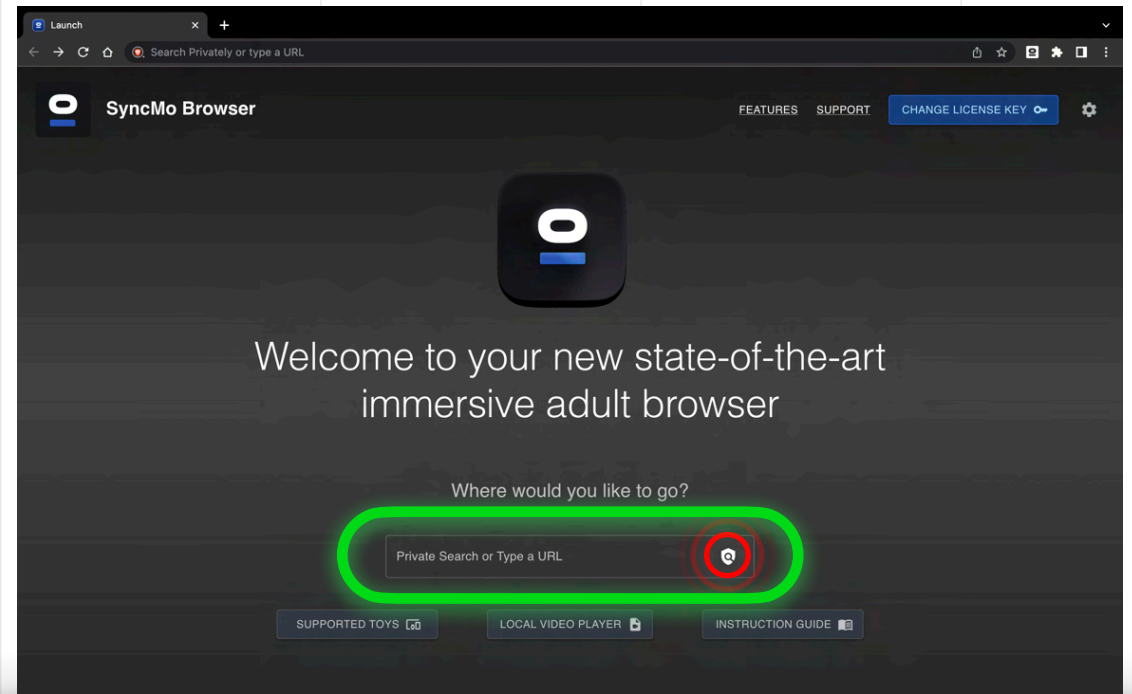
Step 7

Once you are ready simply **choose some content** you want to watch

Type in the **search bar** the type of content or website you wish to watch. Searches are private and secure.

You can also simply use the address bar at the top of the window.

Our software runs only on your local computer. Nothing is sent to us, and we are not involved in any of your usage of our software.

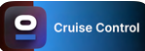


Step 7.1

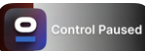
When you are watch video content or live streams, a **video overlay** will appear in the top left of the video



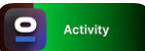
When you stop or pause the video, the display will say **Stopped** and your toy will stop.



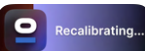
When there is no activity, the display will show **Cruise Control** until activity starts. By default your toy will attempt to maintain arousal during periods of no action. If you would like you device to stop completely, or to do more during these periods, you can change the Cruise Control setting in the **Adult Toy Settings** window as shown earlier in this manual.



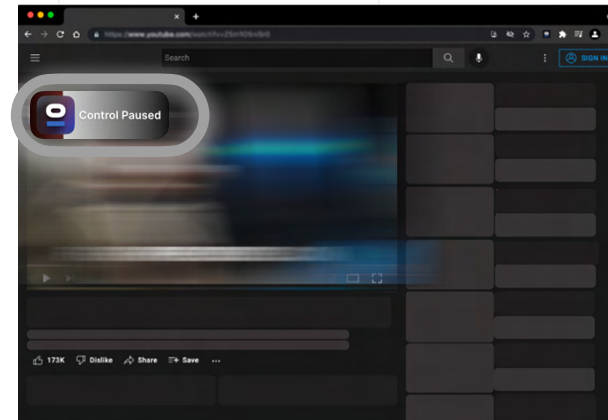
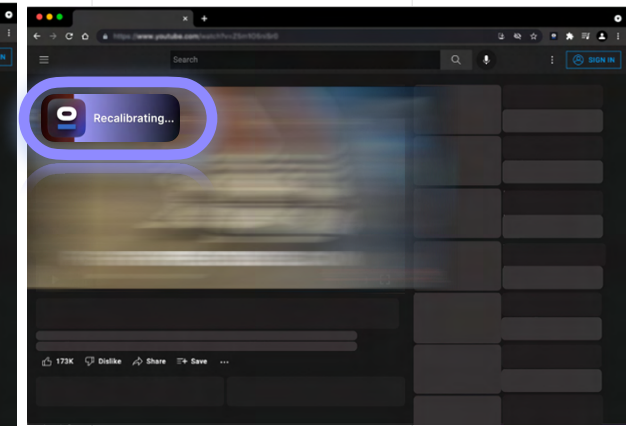
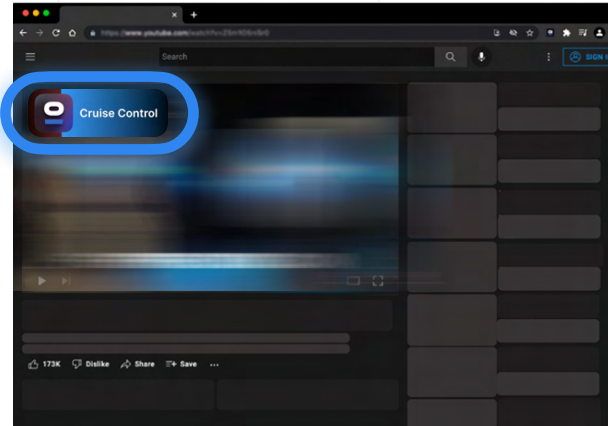
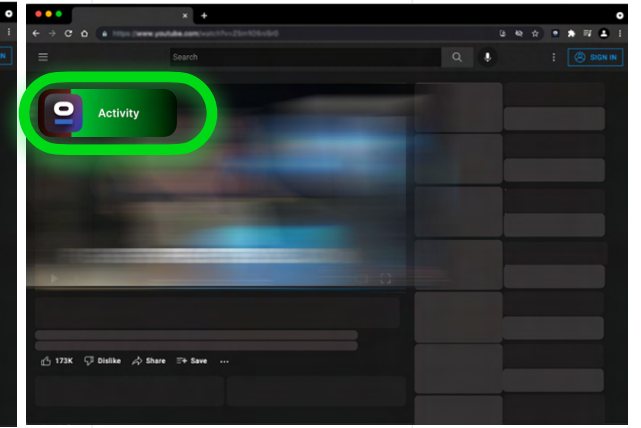
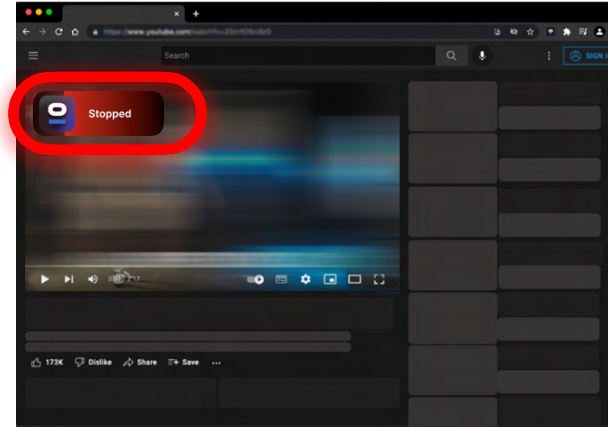
NOTE: If you are not ready to start using the toy until later in the content, you can click the video overlay, and it will change to **Paused** – this will pause control of your sexual device until you are ready to begin. When you ready, simply press it again to resume.



When your toy is receiving speeds in sync with the action you are watching the display will say **Activity**



When you toggle the video forward or back to play a certain section when you have stopped toggling the system will recalibrate the tracking and then resume this takes a few seconds – the display will say **Recalibrating**

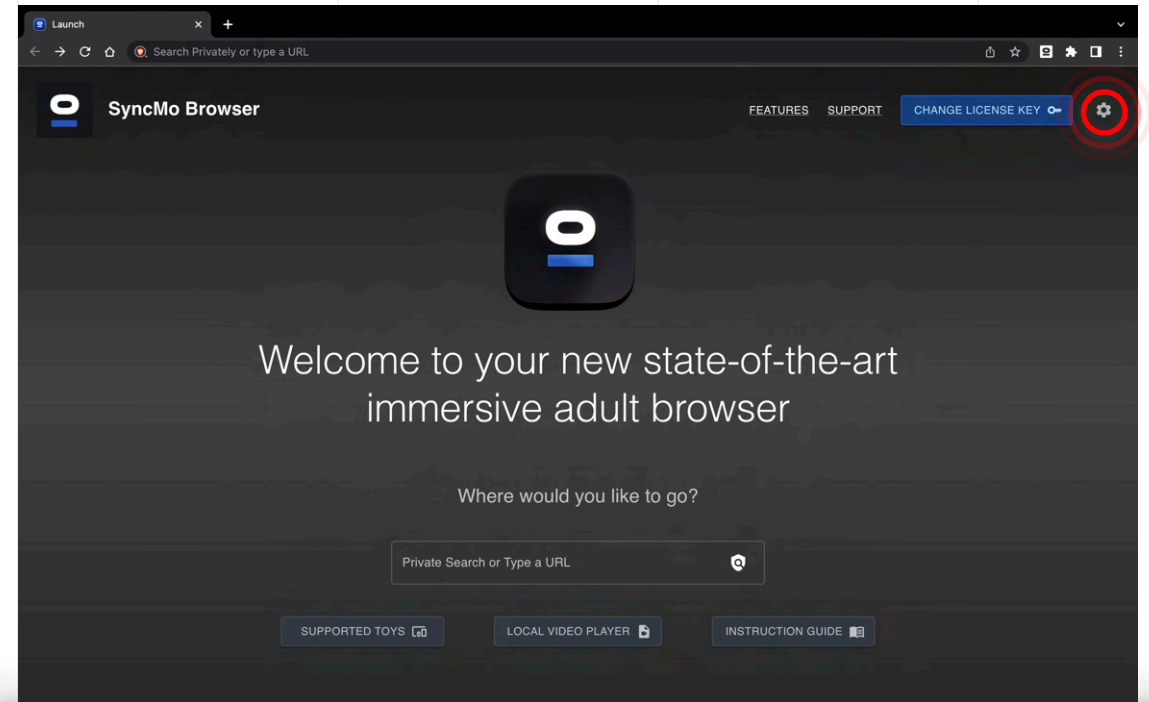
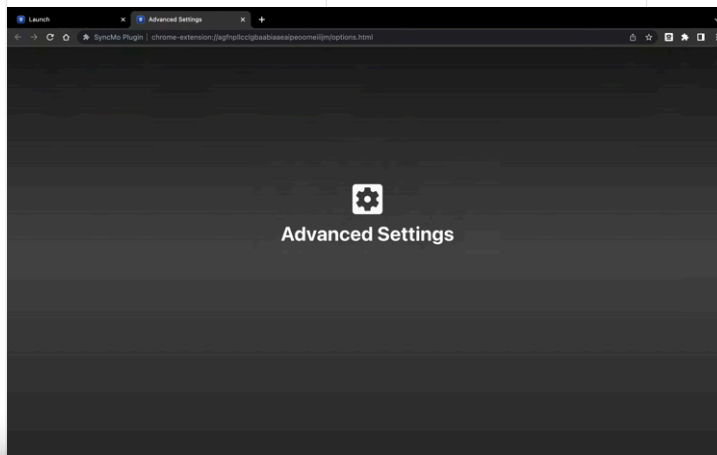


Step 8

**You can access
Advanced Settings by
selecting the icon on the
launch page**


(to the right of change license key button)

The advance settings menu will open
in a new tab



Step 8.1

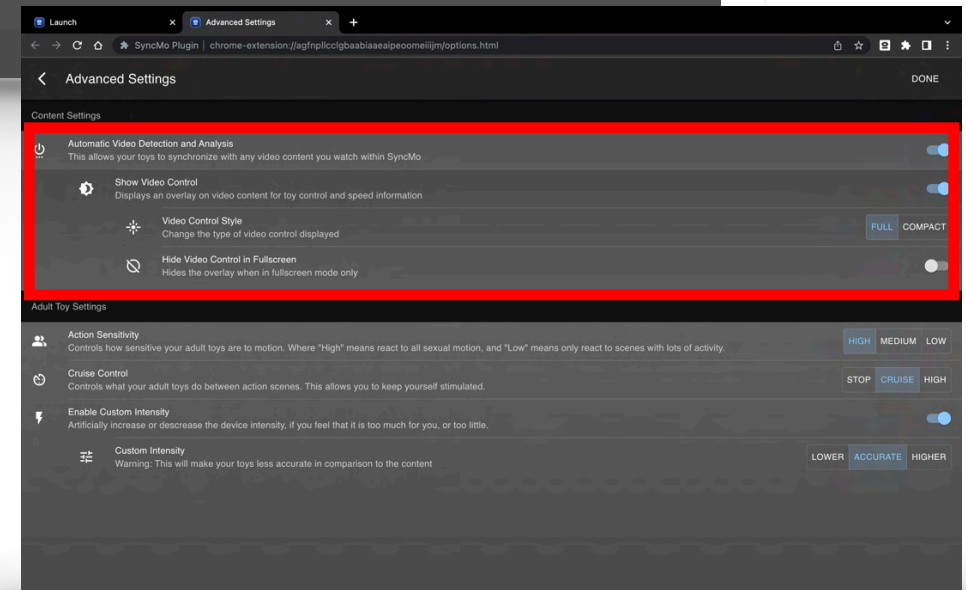
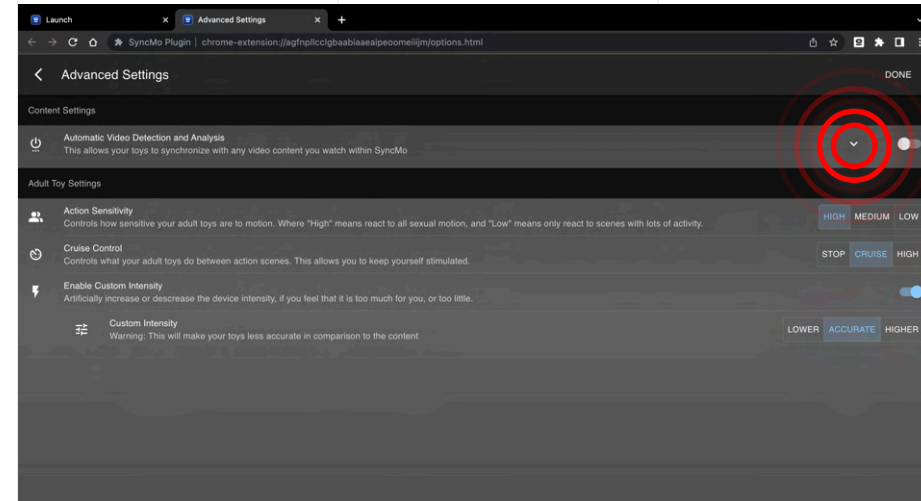
Advanced Content Settings

Click  to expand the menu and to auto-enable video detection and analysis

Show Video Control: Here you can choose to show or hide the video overlay.

Hide Video Control in Fullscreen: You can also choose just to hide the overlay when in full screen mode.

Video Control Style: You can also choose the video overlay style. **Full** shows a full textual and graphical overlay, and **Compact** simply shows a discreet graphical overlay which uses colours to show different statuses.



Step 8.2

Advanced Toy Settings

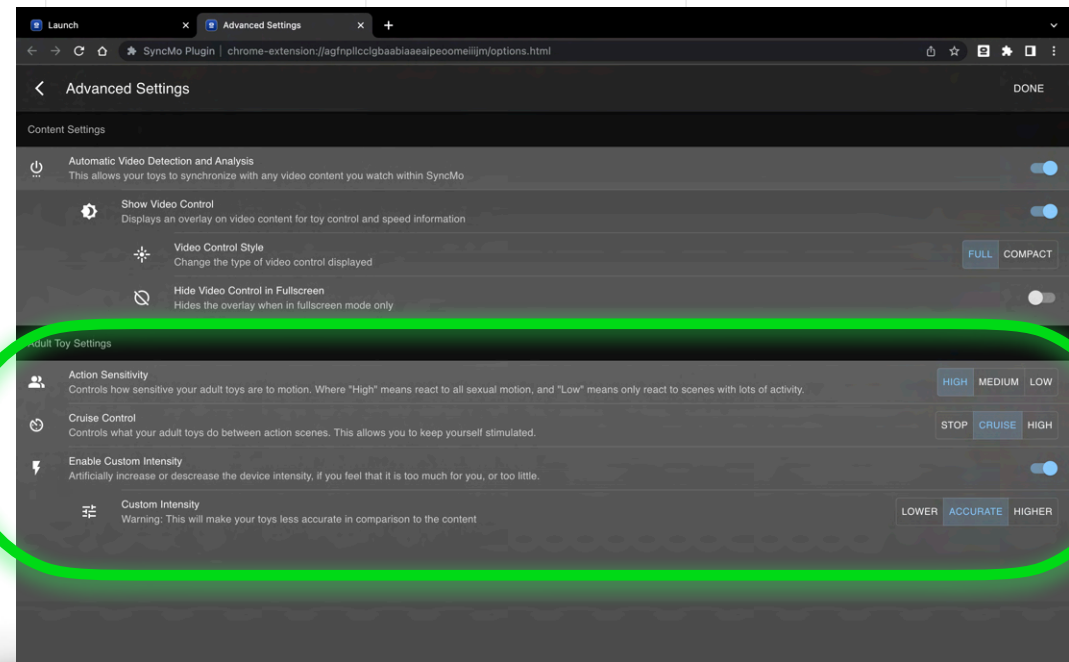
Here you can control how your adult toy reacts to the content you are watching

Action Sensitivity: You can choose how sensitive your toy is to motion.

Cruise Control: You can also choose what your toy does when the motion stops between scenes.

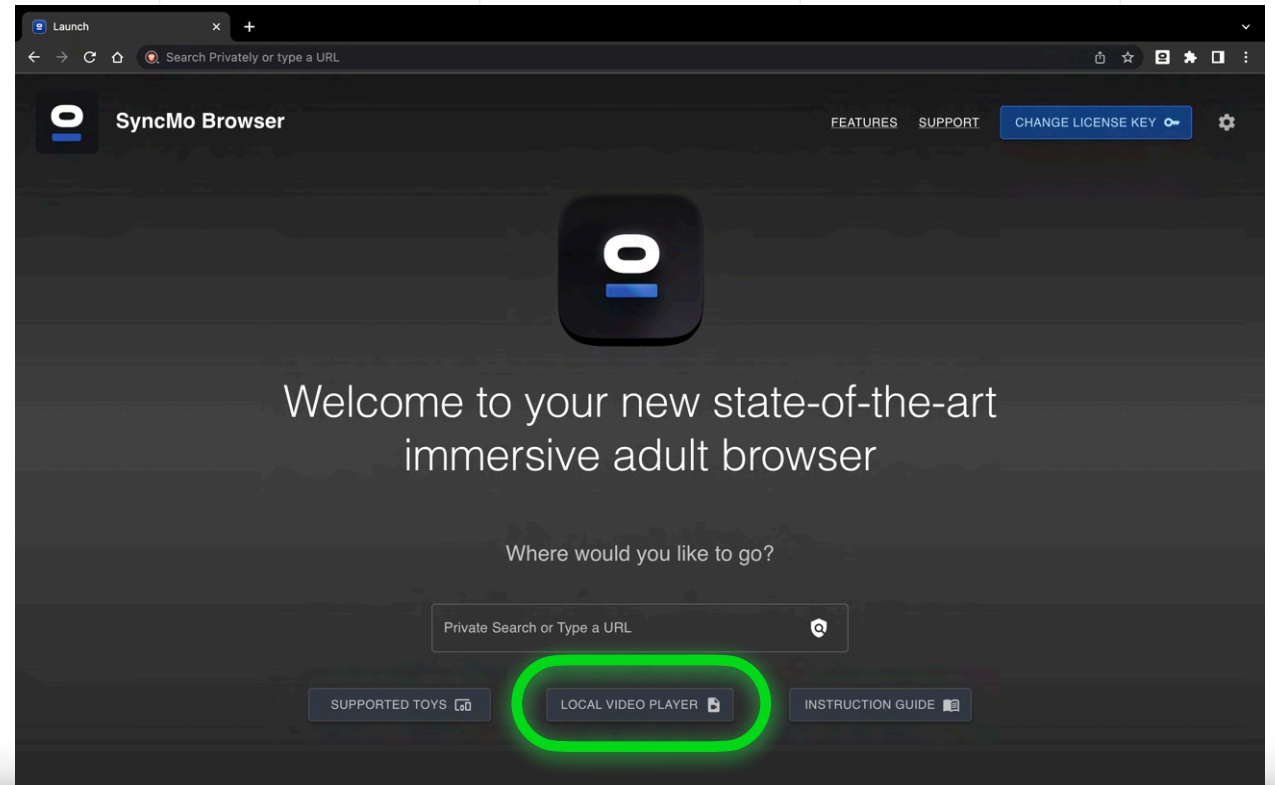
Enable Custom Intensity: You can artificially increase or decrease the commands sent to your toy, if you are either finding it hard to last long during content, or finding reactions to content not enough to maintain arousal

(Warning: This will make your toy inaccurate in relation to the content)



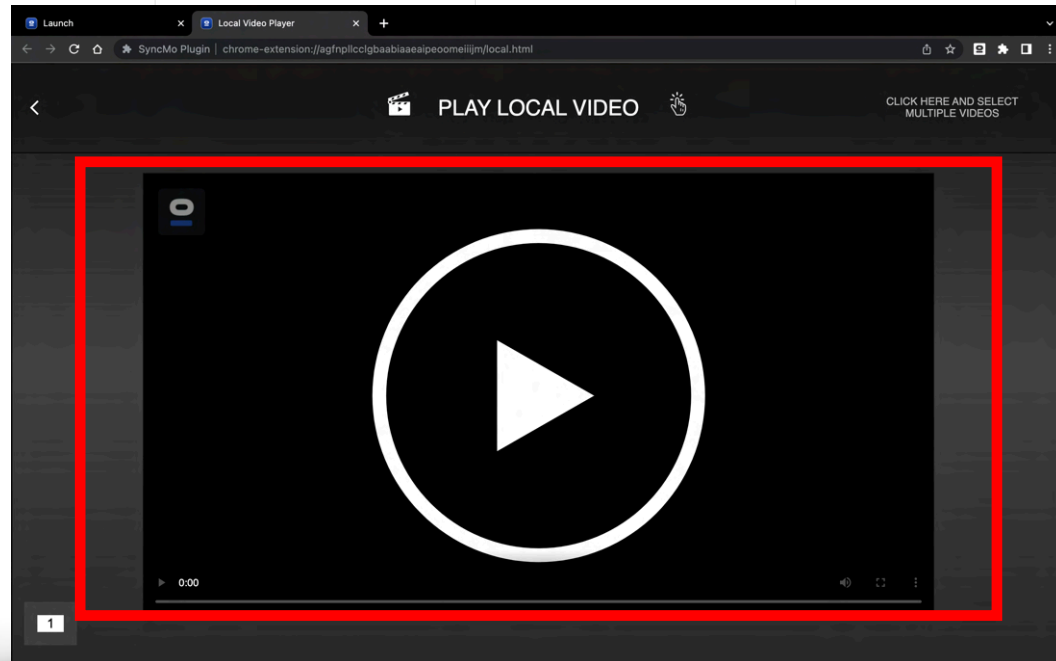
Step 7

To play your own local video files, choose **Local Video Player** on the launch page



Step 7.1

Click on the **Player** to select your videos



You can select multiple videos in the same folder, or you can add videos one by one to create a playlist (by clicking the “+” sign at the top of the playlist).

