



SyncMoTM

QUICK START GUIDE

Step 1

Check your **MacOS** version and Processor Type

Compatible Mac OS

Monterey

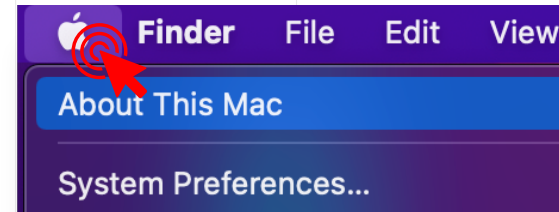


NOTE: Please update your MacOS to Monterey to be compatible with SyncMo

Type of Processor or chip your Mac has:

Intel

M1 chip



Step 2

Once you know which MacOS version and processor **download the correct installer PKG**



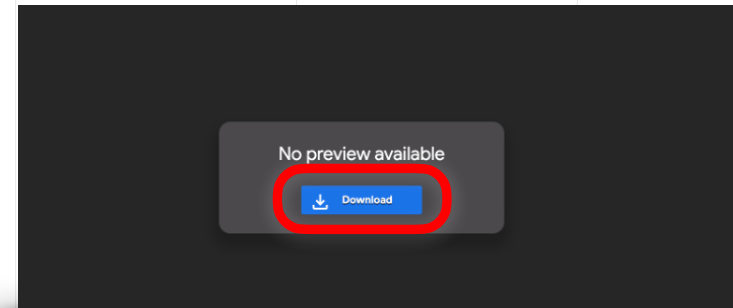
For M1 chip for MacOS Monterey

[Syncmo plugin for MacOS M1.pkg](#)



For Intel processor MacOS Monterey

[Syncmo plugin for MacOS Intel.pkg](#)



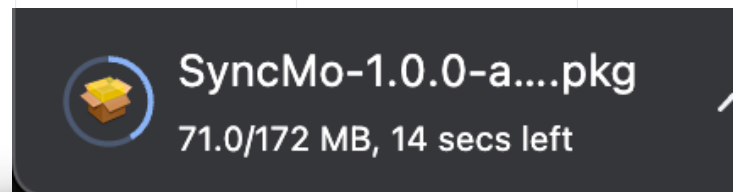
Google Drive has detected issues with your download

This file is too large for Google to scan for viruses.

This file is executable and may harm your computer.

[SyncMo-1.0.0-arm64-m1.pkg](#) (172M)

Download anyway

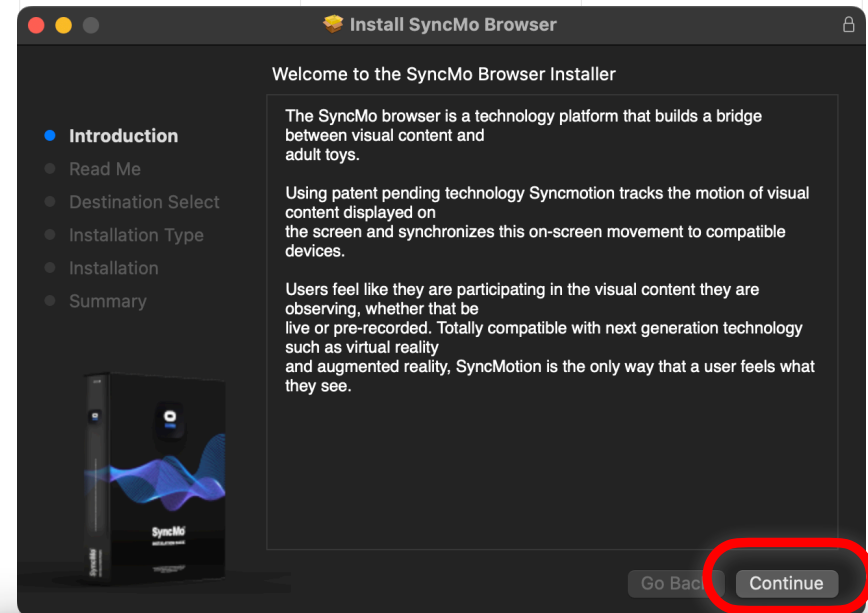


Step 3

Once the Installer PKG file is downloaded

Go to downloads and click to open file

Once the installer is open follow the Instructions

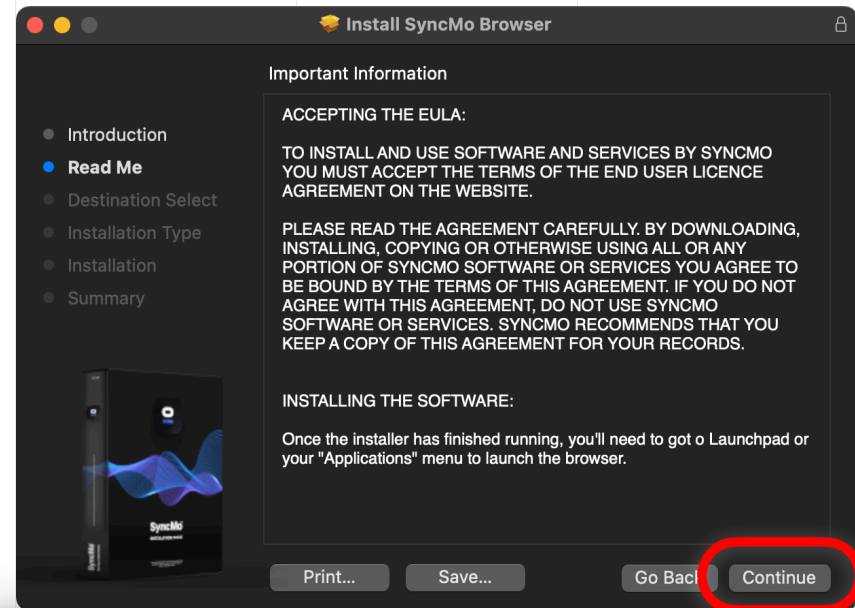


Step 3.1

Read Me

Press

Continue

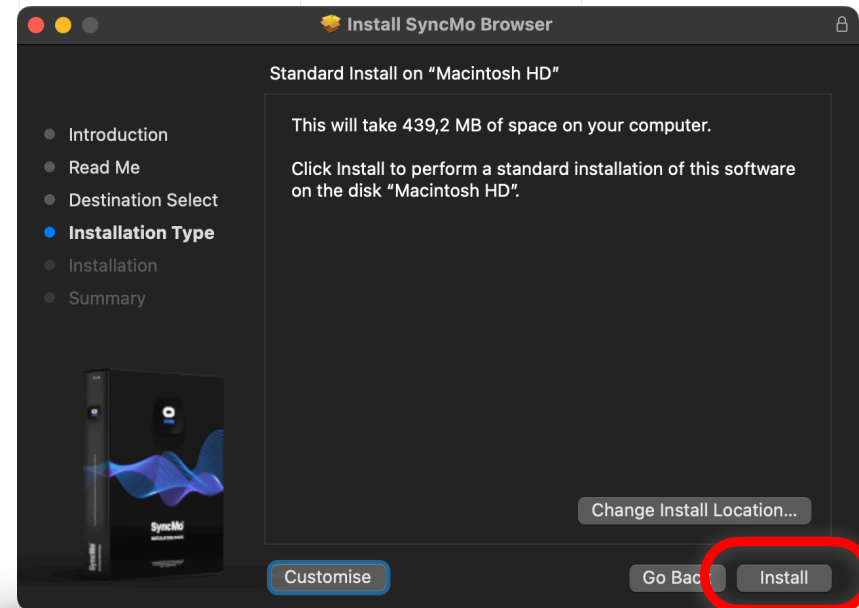


Step 3.2

Destination select and Installation Type

Press

Install

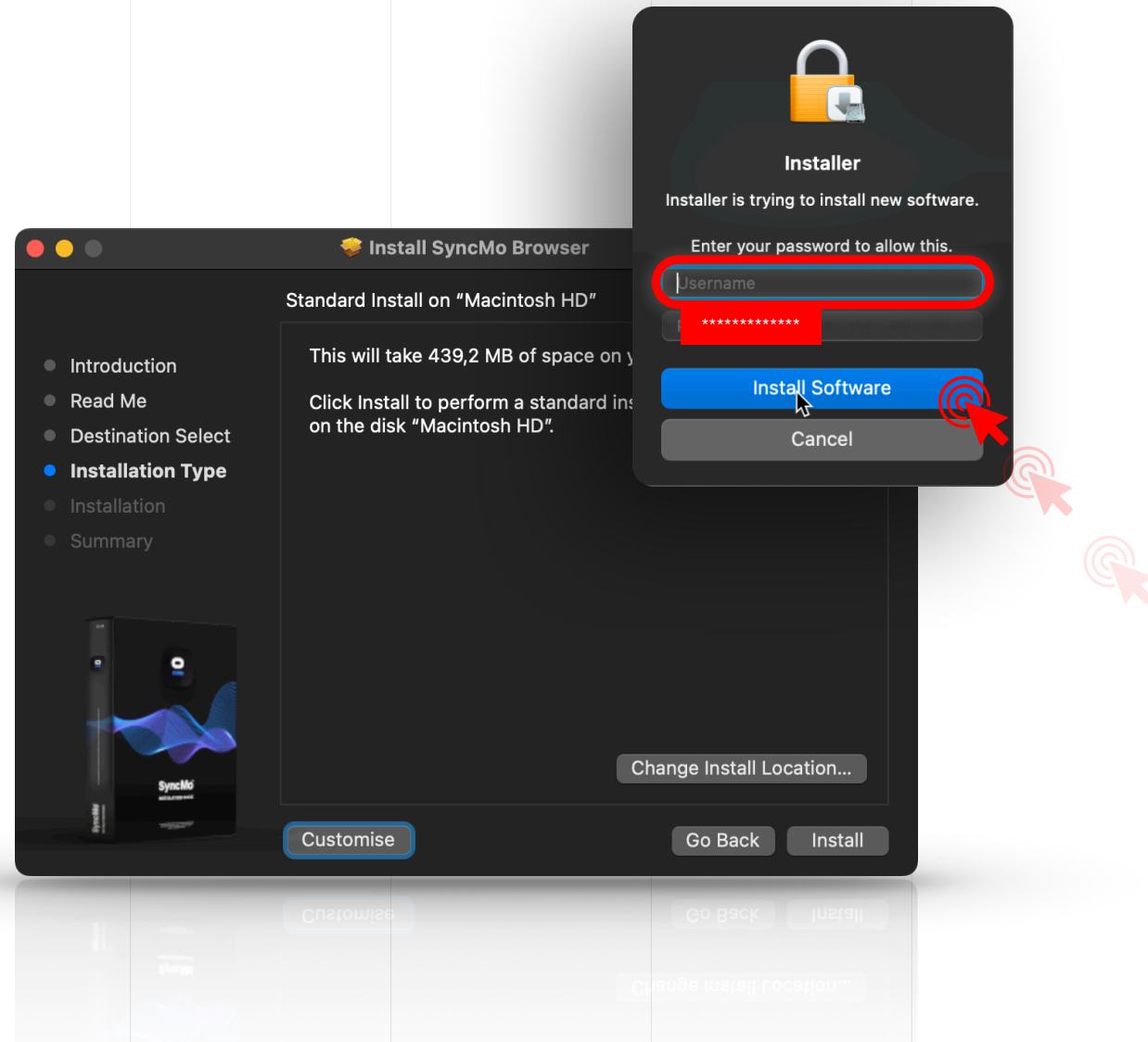


Step 3.3

Enter your System Password

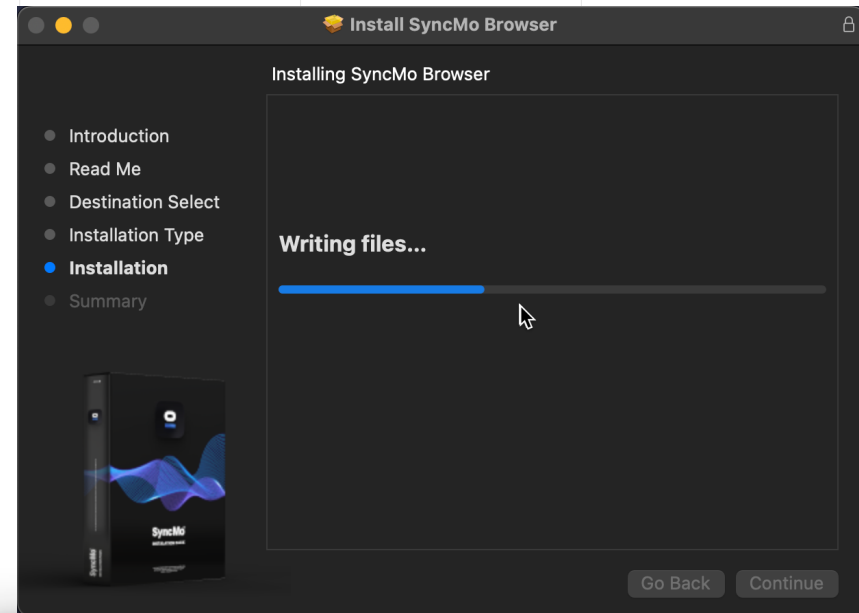
Press

Install Software



Step 3.4

**Wait for a few
seconds while
everything installs**

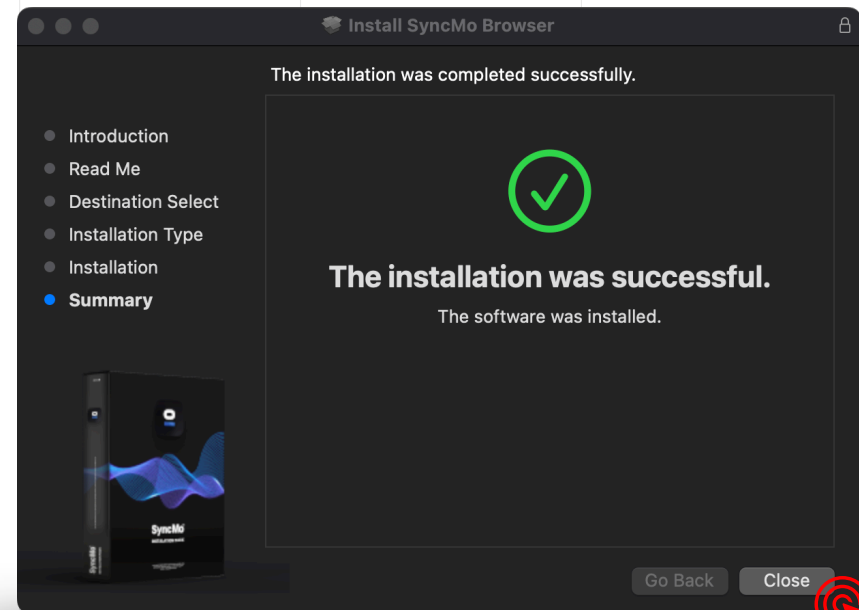


Step 3.5

Once the installation is
successful

Press

Close



Step 3.6

Press

Keep

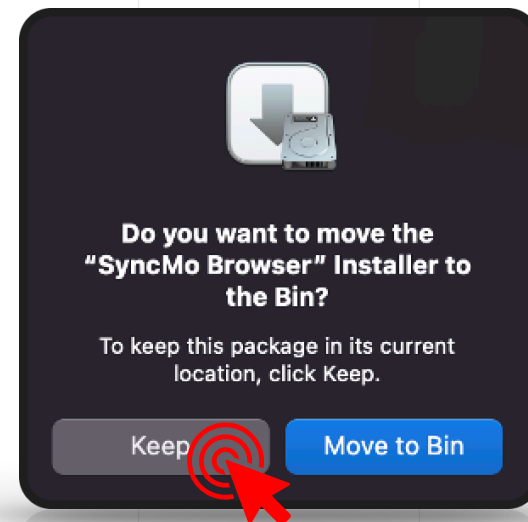
– this will keep the PKG in your downloads

Press

Move to Bin

-this will move the PKG from downloads to Trash

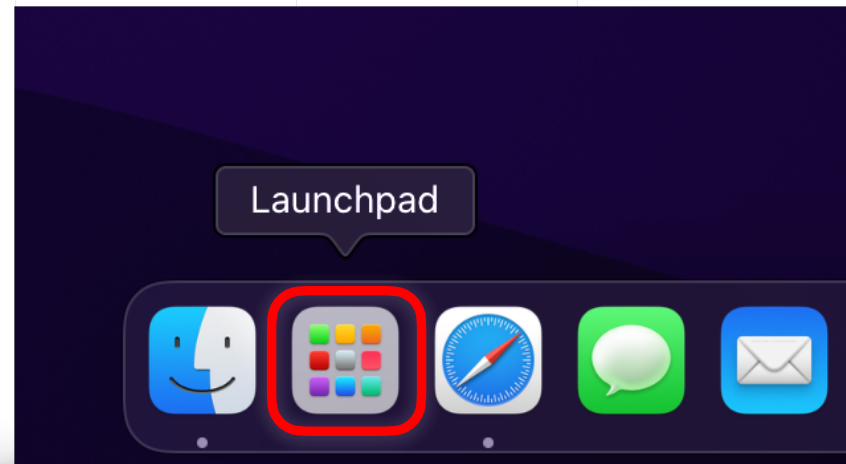
After you press Keep the installer will close



Step 4

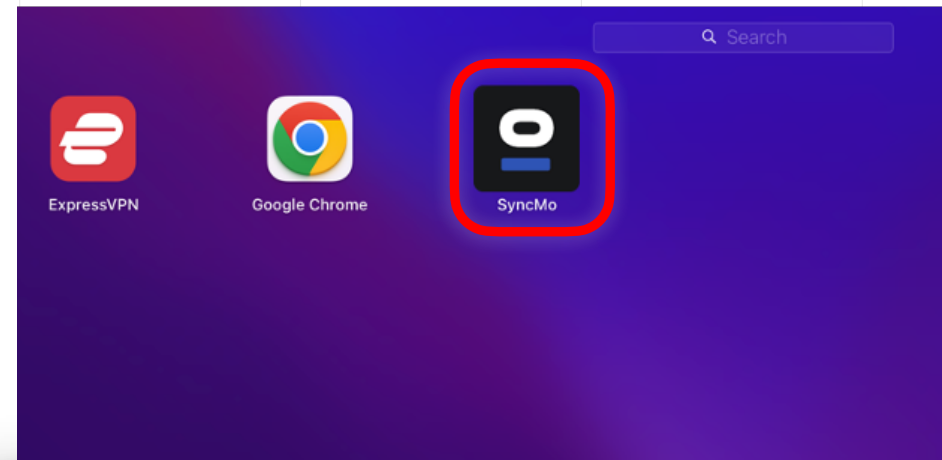
To launch **SyncMo**

Go to launchpad on your desktop and select



Step 4.1

In Launchpad you will find the **SyncMo icon** with your other apps



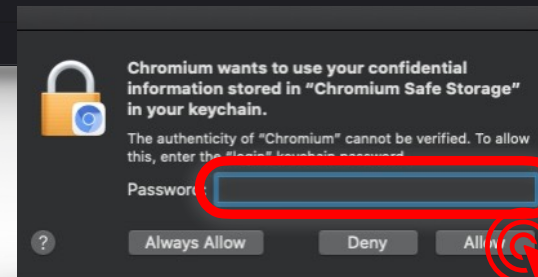
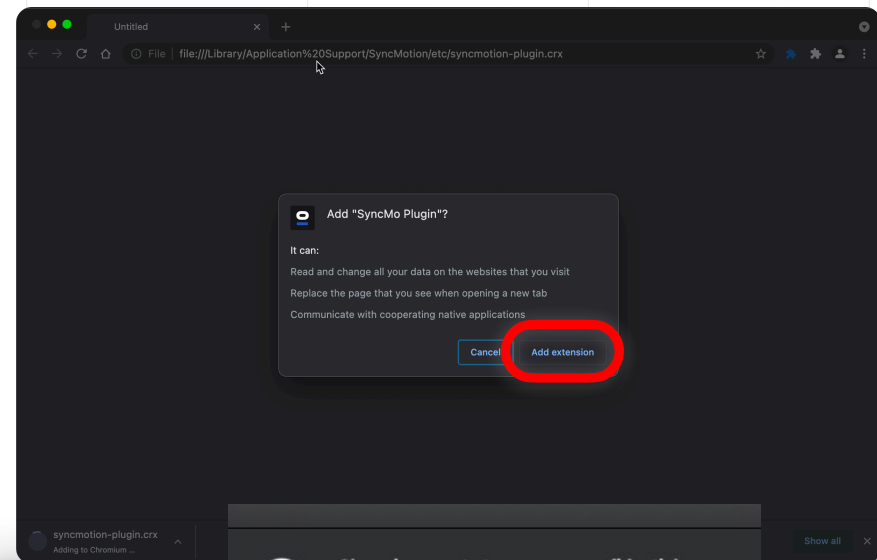
Step 4.2

The SyncMo browser will open and ask you to add SyncMo Plugin

Select

Add Extension

NOTE: If at anytime the dialog below pops up asking if you want to allow Keychain access (this is so you can save passwords to websites you visit) You can select **Deny** or **Allow** after entering your **system password**



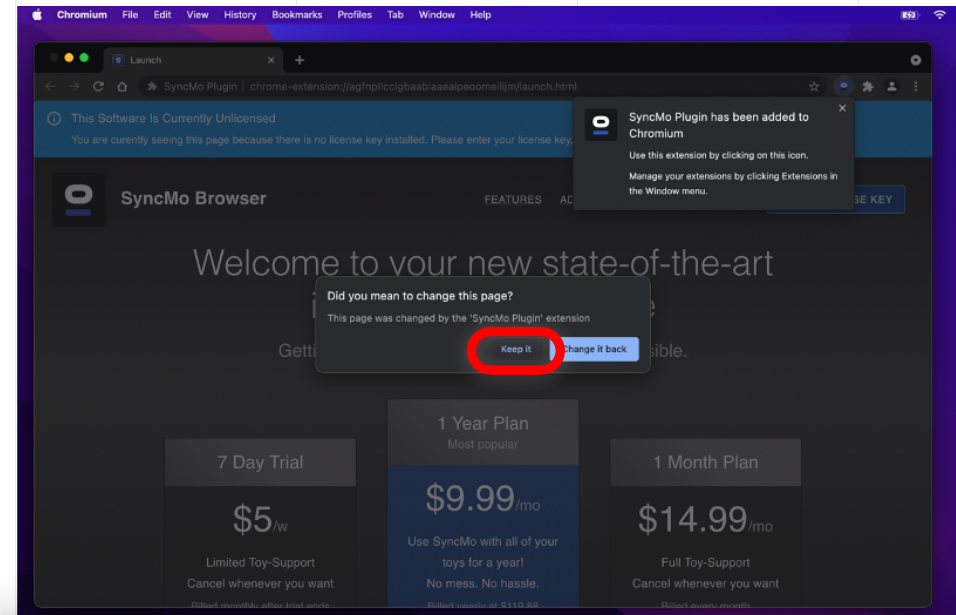
Step 4.3

SyncMo Browser launch page will open

Did you mean to change this page?

Select

Keep it



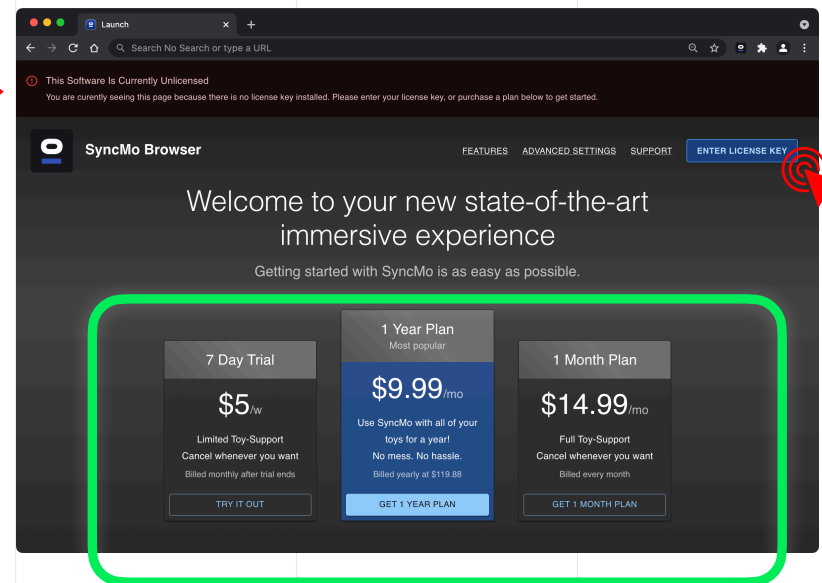
Step 5

If you have received your
license key

Select

Enter license key

*Note: If you do not have a license key, you have the option here to **get a plan** in order to get a license key to activate the motion tracking and connect toy functions*



Step 5.1

Enter your

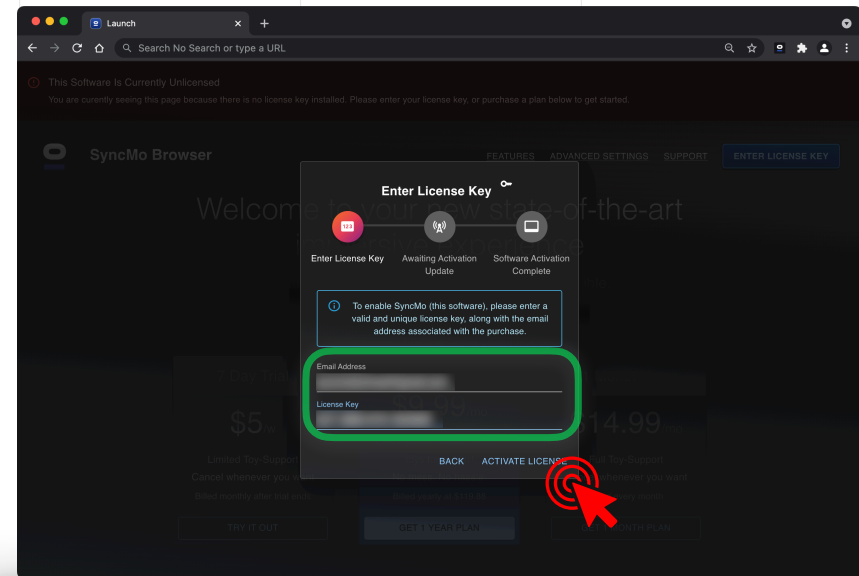
Email Address

Enter your

License Key

Then press

Activate License

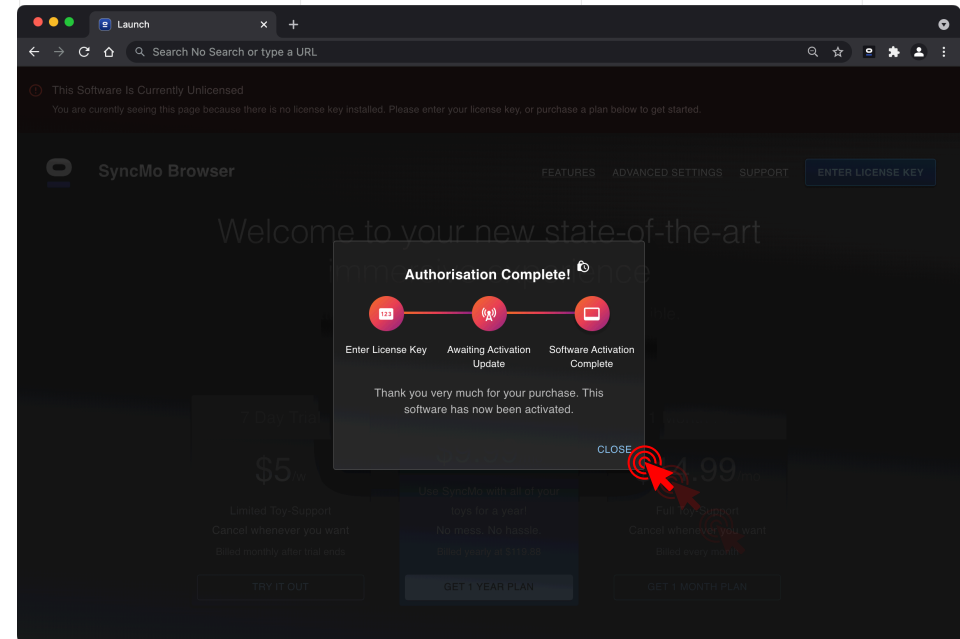


Step 5.2

Authorisation complete

Press

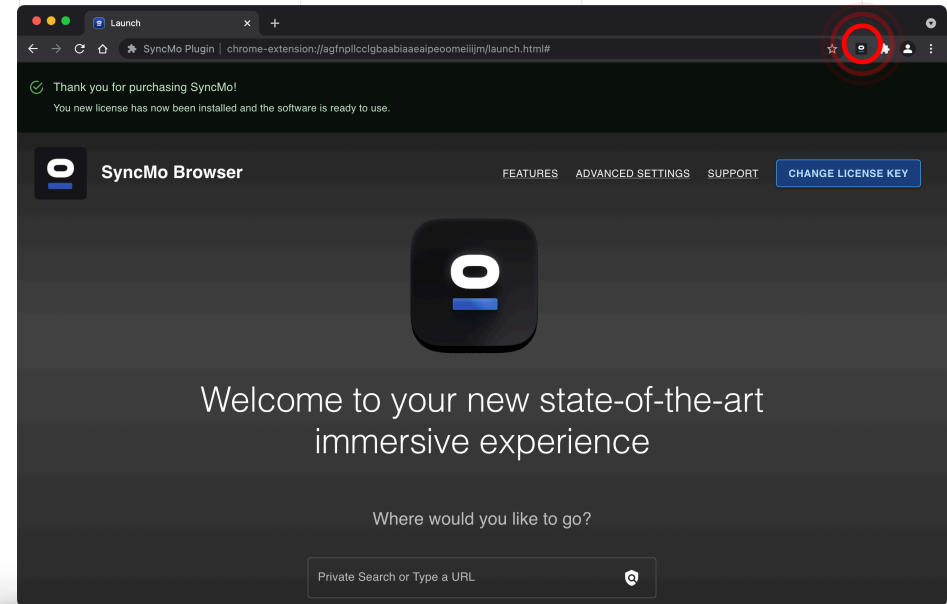
Close



Step 6

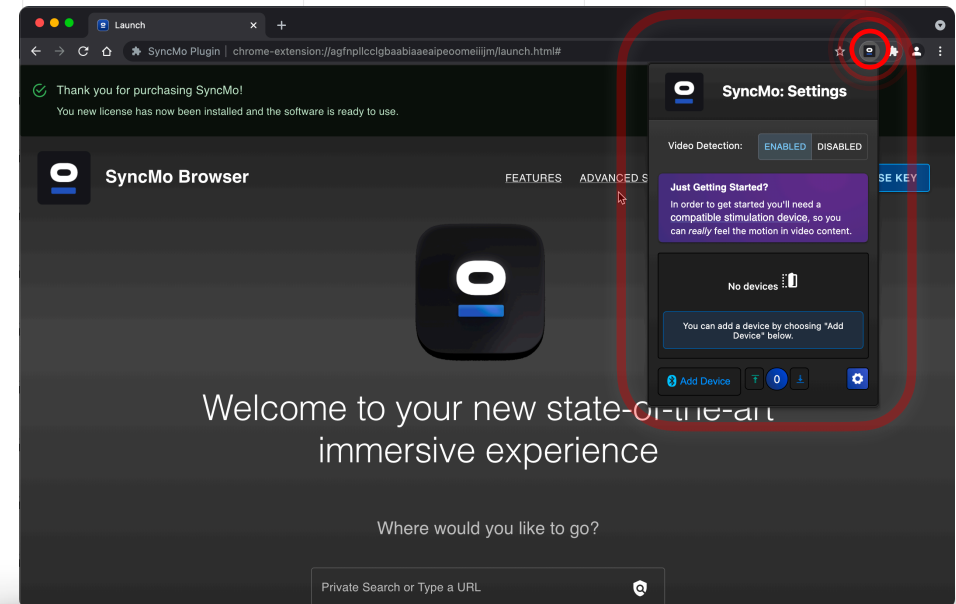
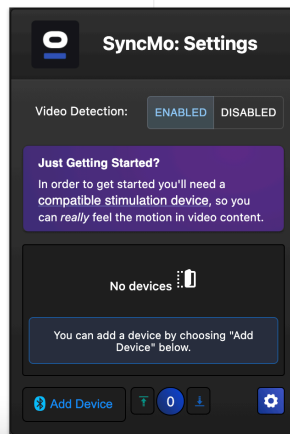
Now SyncMo is activated

Press the SyncMo Icon in the navigation bar



Step 6.1

SyncMo settings will drop
down from icon select



Step 6.2

In SyncMo settings For video detection

Select

Enabled

Adult toy connect

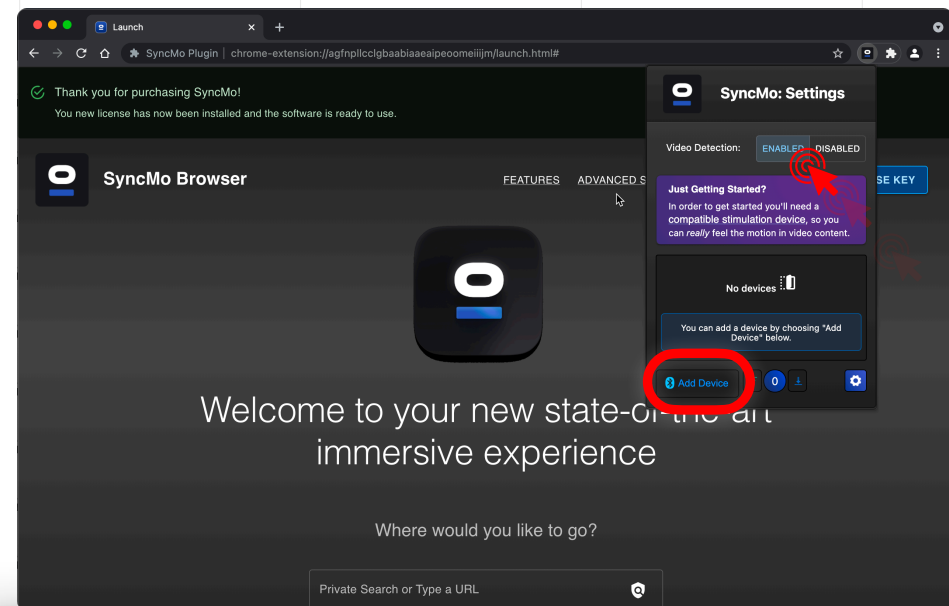
Then make sure your adult toy is switched on
and is in **discovery mode**

On your computer make sure Bluetooth is
turned on



Then in SyncMo settings select

add device



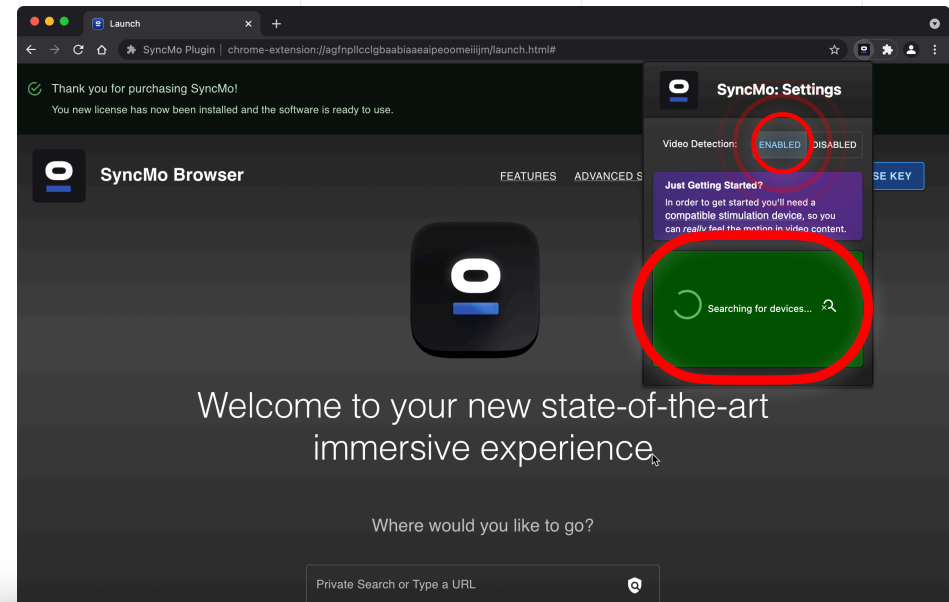
Step 6.3

SyncMo will now search for devices

NOTE: During the first time you add device you may be asked to allow some google permissions to allow use of your computers Bluetooth

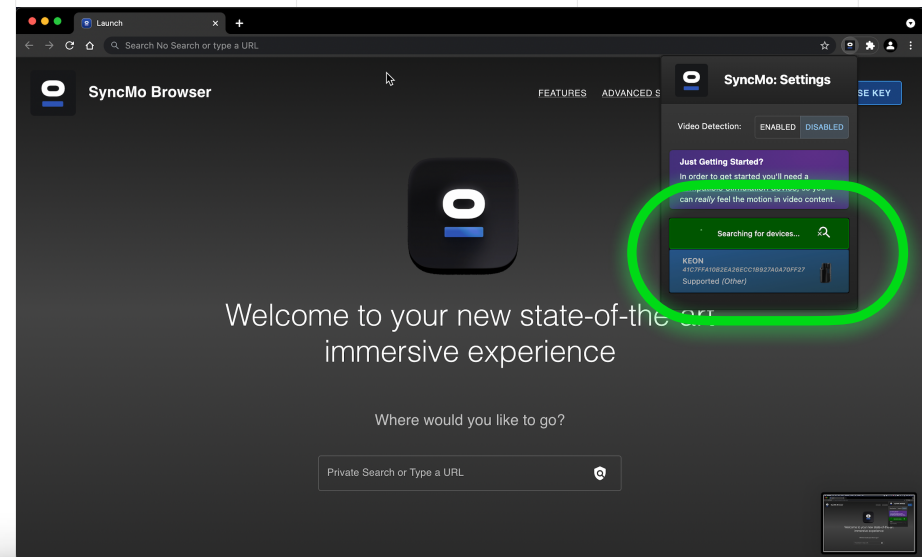
Your **adult toy** will appear
under the search section click
on the adult toy to **connect**

NOTE: More than one toy can be connected if required, however depending on the toy a maximum of 3 toys connected at one time is recommended.



Step 6.4

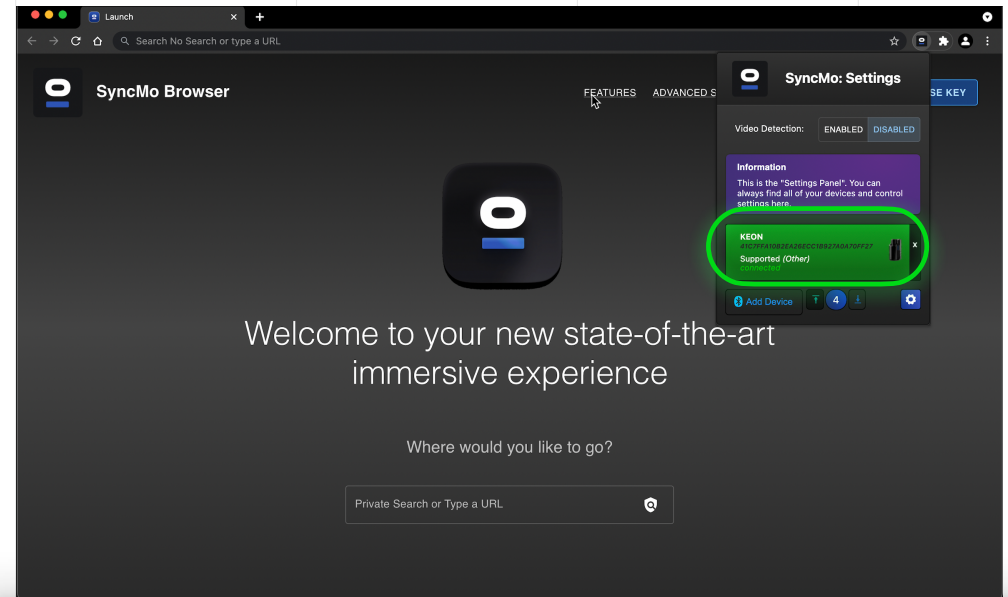
Once your Adult Toy is connected the section will be green and say connected



Step 6.5

Now your toy **is**
connected

You can **test the speeds of your Adult toy** to make sure it is receiving speed commands from SyncMo



Step 6.6



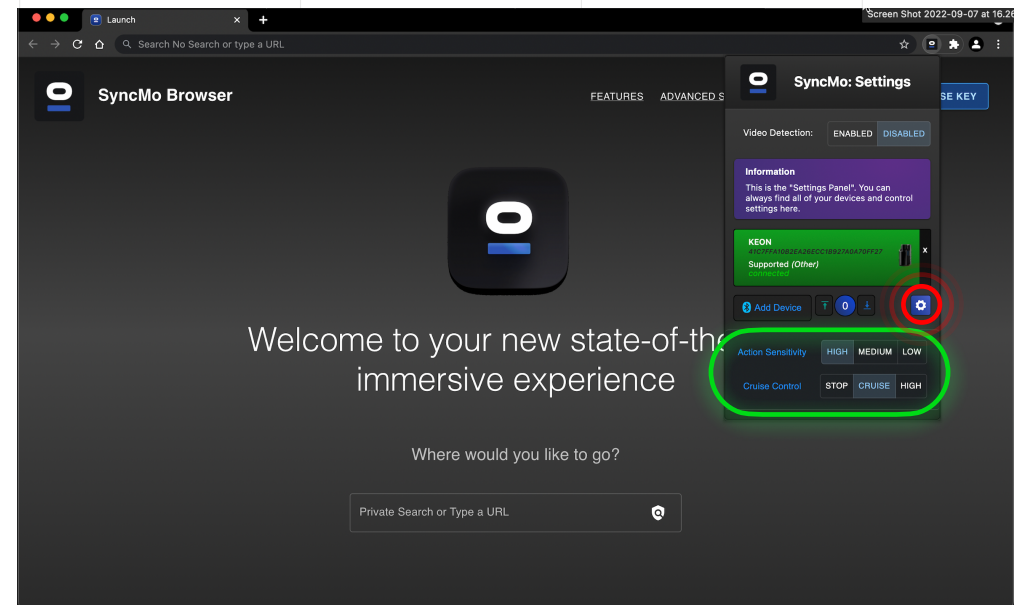
Now click the **settings button** to the right of the Speed test buttons

Action Sensitivity

- High** - Very reactive to any movement to start toy speeds
- Med** - Requires Med motion to start toy speed activity
- Low** - Requires High motion to start toy speed activity

Cruise control

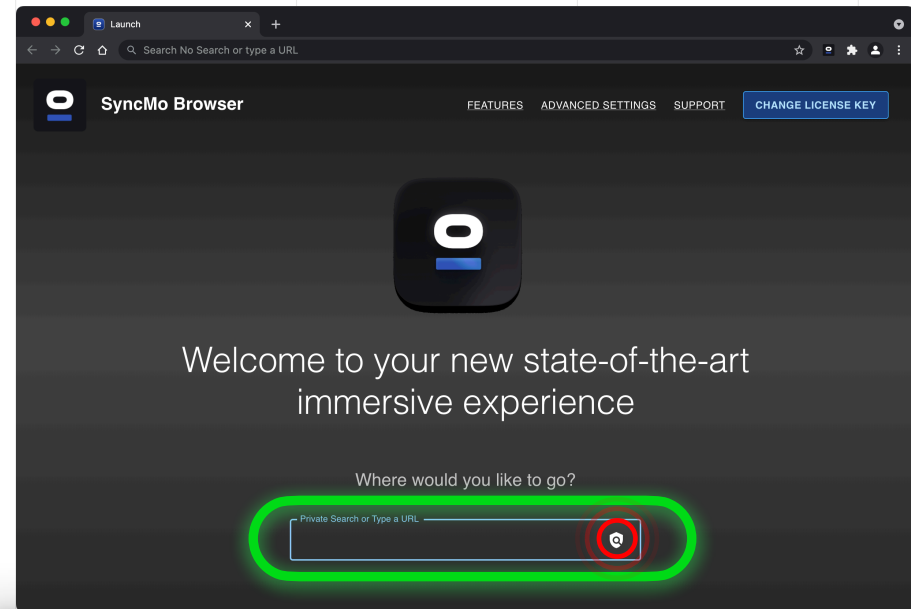
- Stop** - This means when the action tracked movement is 0 your toy will stop
- Cruise** - This means when the tracked movement is 0 the toy will keep a minimum speed (custom or speed 1) until speed activity starts again
(This is to maintain arousal until the action picks up again)
- High** - This means when the tracked movement is 0 the toy will keep a higher speed (Speed 2) until speed activity starts again



Step 7

Once you are ready to **choose the content** you want to connect your adult toy to

Type in the **search bar** the type of content or the website that has the type of content you want to watch



Step 7.1

Once you have selected a video or live stream the display video overlay in the **top left of video window** will appear

It will display **Starting session**

Then **Starting**

When you stop or pause the video, then the display will say **Stopped** and your toy will stop and will start when the display says activity

If cruise is set to cruise or high then the toy will start in **cruise control** (custom speed, speed 1 or 2) until activity starts.

NOTE: If you are not ready to start using the toy until you are stimulated by the content then you can click the icon in the display, and it will change to **Control paused** – this means the action is being tracked until you are ready with your toy (when you are ready with your toy then press the icon again to resume toy commands)

When your toy is receiving speeds in sync with the action you are watching the display will say **Activity**

When you toggle the video forward or back to play a certain section when you have stopped toggling the system will recalibrate the tracking and then resume this takes a few seconds – the display will say **Recalibrating**

